

ANIMAL KINGDOM

Protozoans, basis of classification and Phylum porifera

1. Pick the odd pair out :-
 - (1) Cellular level : Porifera
 - (2) Tissue level : Aschelminthes
 - (3) Organ level : Platyhelminthes
 - (4) Organ system level : Annelida
2. Animals possess various type of symmetry, select the correctly matched :-
 - (1) Echinodermates – radial symmetry
 - (2) Arthropods – bilateral symmetry
 - (3) Sponges – mostly asymmetrical
 - (4) All of these
3. Select the group of organism given below those have diploblastic members only :-
 - (1) *Ctenoplane*, *Taenia*, *Fasciola*
 - (2) *Physalia*, *Meandrina*
 - (3) *Wuchereria*, *Culex*, *Limulus*
 - (4) *Aedes*, *Ascaris*, *Hydra*
4. Open blood vascular system is found in :-
 - (1) *Saccoglossus* (2) *Anopheles*
 - (3) *Pila* (4) All of these
5. Select the option with all pseudocoelomates animals ?
 - (1) *Ascaris*, *Fasciola*, *Taenia*
 - (2) *Culex*, *Locusta*, *Limulus*
 - (3) *Wuchereria*, *Ascaris*, *Ancylostoma*
 - (4) *Nereis*, *Hirudinaria*, *Wuchereria*
6. Closed blood vascular system is found in :-
 - (1) *Bombyx* (2) *Sepia*
 - (3) *Balanoglossus* (4) *Ascidia*
7. The members of phylum porifera are called sponges, having numerous distinguishable character, but which of the following is considered as their peculiar character?
 - (1) These are diploblastic animals
 - (2) Mostly members are marine and some are fresh water
 - (3) Choanocytes which line the spongocoel
 - (4) Intracellular digestion
8. Organ level of organisation is found in :-
 - (1) *Spongilla* (2) *Pleurobranchia*
 - (3) *Taenia* (4) *Obelia*
9. *Spongilla* and *Euspongia* are the members of phylum porifera, bearing which of the following characters?
 - (1) They have a water transport or canal system.
 - (2) These are hermaphrodites with internal fertilization
 - (3) Both 1 and 2
 - (4) These are exclusively marine
10. Select the set of organisms which have metameric segmentation :-
 - (1) *Physalia*, *Fasciola*, *Hirudinaria*
 - (2) *Gorgonia*, *Aedes*, *Chaetopleura*
 - (3) *Asterias*, *Balanoglossus*, *Branchiostoma*
 - (4) *Pheretima*, *Periplaneta*, *Frog*
11. Locomotory structure are absent in :-
 - (1) Flagellated protozoans
 - (2) Sporozoans
 - (3) Ciliated protozoans
 - (4) Amoeboid protozoans
12. Amoeboid protozoans are characterised by :-
 - (1) Cilia
 - (2) Flagella
 - (3) Pseudopodia
 - (4) None of these
13. Which of the following pair is not correctly matched ?
 - (1) *Entamoeba* : Dysentery
 - (2) *Plasmodium* : Malaria
 - (3) *Trypanosoma* : Kala azar
 - (4) *Giardia* : Diarrhoea
14. The correct set for porifera is :-
 - (1) Acoelomates, Fresh water, Zooplanktonic, Triploblastic, Cell aggregate body plan
 - (2) Eucoelomates, Marine, Sedentary, diploblastic, blind sac body plan
 - (3) Cellular level of organisation, Mostly Marine, Sedentary, diploblastic
 - (4) Acoelomates, Marine, Sedentary, diploblastic, blind sac body plan

15. Which one of the following invertebrates is a protostomic, bilateral symmetric and pseudocoelomate :-
 (1) *Pila* (2) *Aphrodite*
 (3) *Wuchereria* (4) *Hirudinaria*
16. Choose the correct statement from the following :-
 (1) Poriferans are generally marine
 (2) Mostly poriferans are asymmetrical
 (3) Choanocytes or collar cells line the spongocoel and the canals.
 (4) All of the above
17. Digestion in Cnidarians is :-
 (1) Extracellular (2) Intracellular
 (3) Both 1 and 2 (4) None of these
18. Which of the following sponge is also known as 'Bath sponge' ?
 (1) *Spongilla* (2) *Scypha*
 (3) *Euspongia* (4) *Leucosolenia*
19. Which of the following is not locomotory organelles of protozoans ?
 (1) Cilia (2) Flagella
 (3) Tubefeet (4) Pseudopodia
20. Metamerism is found in :-
 (1) Arthropoda, Annelida, Chordata
 (2) Mollusca, Porifera, Echinodermata
 (3) Aschelminthes, Annelida, Chordata
 (4) Annelida, Arthropoda, Mollusca
21. *Trypanosoma* belongs to group :-
 (1) *Amoeboids protozoans*
 (2) *Sporozoans*
 (3) *Flagellated protozoans*
 (4) *Ciliated protozoans*
22. *Paramecium* moves about by :-
 (1) Pseudopodia
 (2) Cilia
 (3) Both 1 and 2
 (4) Flagella
23. The phyla showing radial symmetry :-
 (1) Echinodermata, coelenterata and ctenophora
 (2) Porifera, mollusca and echinodermata
 (3) Protozoa and coelenterata
 (4) Coelenterata, ctenophora and annelida

24. The symmetry found in an animal which can be divided into indential left and right halves in only one plane is:-

(1) Spherical (2) Bilateral
 (3) Radial (4) Biradial

25. Gullet of *Paramecium* is meant for :-

(1) Osmoregulation (2) Ingestion
 (3) Egestion (4) Reproduction

26. Which one is monogenetic parasite ?

(1) *Trypanosoma* (2) *Plasmodium*
 (3) *Entamoeba* (4) *Liver fluke*

Phylum Coelenterata to Hemichordata

27. Echinodermates are considered as the first deuterostomic animals. They possess which of the following common characters?

(1) The adult echinoderms are radially symmetrical but larvae are bilaterally symmetrical.
 (2) Excretory system is absent
 (3) Development is indirect with free swimming larva.
 (4) All of the above

28. Phylum Arthropoda considered as the largest phylum among the kingdom animalia. They possess which of the following common characters?

(1) They have jointed appendages
 (2) Open blood circulation
 (3) Both 1 and 2
 (4) Excretion takes place through flame cells.

29. *Fasciola* and *Taenia* are the members of phylum platyhelminthes bearing which of the following characters ?

(1) They have organ level of organisation
 (2) Flame cells help in osmoregulation and excretion
 (3) They have dorso-ventrally flattened body
 (4) All of the above

- ▼
- 30.** The biological name of animals and their popular common name are given below, select the correctly matched among following :-
- (1) Ancylostoma - Hookworm
 - (2) Octopus - Squid
 - (3) Antedon - Brittle star
 - (4) Laccifer - Locust
- 31.** The members of phylum Aschelminthes are called round worms, having numerous distinguishable character, but which of the following can not be considered as their character?
- (1) These are pseudocoelomate animals
 - (2) They are bilaterally symmetrical
 - (3) Organ system level of body organisation
 - (4) Round worms are monoecious.
- 32.** Members of phylum annelida and arthropoda show metamerism and have a lot of common features like?
- (1) Solid, double ventral nerve cord
 - (2) Schizocoelomate
 - (3) Both 1 and 2
 - (4) Open blood circulation
- 33.** The body cavity which is lined by mesoderm is called coelom, if the mesoderm is present as scattered pouches in between the ectoderm and endoderm, such a body cavity is called pseudocoelom, select the pseudocoelomate phylum :-
- (1) Annelida
 - (2) Arthropoda
 - (3) Echinodermata
 - (4) Aschelminthes
- 34.** *Apis*, *Bombyx*, *Laccifer* and *Anopheles* are the members of phylum Arthropoda. Select the characters those are exclusive to the members of Phylum-Arthropoda :-
- (1) They have jointed appendages
 - (2) Excretion takes place through malpighian tubules.
 - (3) Both 1 and 2
 - (4) Enterocoelomic coelom
- 35.** Distinguishing character of hemichordate is :-
- (1) Open circulatory system
 - (2) Excretory organ is proboscis gland
 - (3) They are dioecious
 - (4) All of the above
- 36.** Select the distinguishable characters of Echinodermates from Hemichordates :-
- (1) These animals have an endoskeleton of calcareous ossicles
 - (2) They have water vascular system
 - (3) The adult echinoderms are radially symmetrical
 - (4) All of the above
- 37.** An observer collect some sample like *Pheretima*, *Herudinaria* and *Bombyx*, Select the common characters among them :-
- (1) Ventral Nerve chord
 - (2) They show metamerism
 - (3) Both 1 and 2
 - (4) Open circulatory system
- 38.** Which of the following may be considered as the unique feature of members of phylum arthropoda?
- (1) They have ventral nerve cord
 - (2) They have open circulatory system
 - (3) They have jointed appendages
 - (4) Development may be direct or indirect
- 39.** *Nereis* and *Pheretima* are similar to *Sepia* and *Octopus* in which one of the following features?
- (1) Dorsal nerve cord
 - (2) They are dioecious
 - (3) Both 1 and 2
 - (4) Closed circulatory system
- 40.** In which one of the following organism its respiratory organs are correctly matched ?
- (1) Starfish - Pharyngeal Gills
 - (2) King crab - Book gills
 - (3) Cuttle fish - Book lungs
 - (4) Earthworm - Tracheal system
- ▲

41. Which one of the following statements is correct either for *Physalia* or *Pila* or both.
- (1) They have organ system level of organisation.
 - (2) They are bilaterally symmetrical.
 - (3) *Pila* has a rasping organs for feeding called radula
 - (4) *Pila* is also called as Fresh water mussel
42. Which one of the following statements about certain given animals is correct?
- (1) *Octopus* shows metamerism
 - (2) Flat worms are pseudocoelomates
 - (3) Insects are coelomates
 - (4) Adult echinoderms are bilaterally symmetrical
43. Which one of the following is not a characteristic of phylum mollusca ?
- (1) Coelomates
 - (2) Segmentation
 - (3) Mantle
 - (4) Shell
44. Which one of the following phyla is correctly matched with its general characteristics ?
- (1) Porifera - Cellular level of organisation and external fertilisation
 - (2) Coelenterata - Diploblastic and internal fertilisation
 - (3) Aschelminthes - Pseudocoelomates and dioecious
 - (4) Hemichordata - Coelomates and closed circulatory system
45. Which of the following pair of animals comprise 'Comb jellies'?
- (1) *Balanoglossus* and *Saccoglossus*
 - (2) *Pleurobranchia* and *Ctenoplana*
 - (3) Sea anemone and sea pen
 - (4) Sea lily and brittle star
46. Select the incorrect statement among the following:-
- (1) Members of phylum ctenophora are commonly known as "Comb Jellies".
 - (2) When any plane passing through the central axis of the body divides the organism into two identical halves, is called radial symmetry
 - (3) Earthworm and *Nereis* are monoecious
 - (4) Body of *Balanoglossus* is composed of proboscis, collar and trunk
47. What is common to *Pheretima*, *Culex* and *Limulus*?
- (1) Ventral nerve cord
 - (2) Metamerism
 - (3) Coelomate
 - (4) All of the above
48. Which of the following pairs are correctly matched?
- (A) Flame cells - *Taenia*, *Fasciola*
 - (B) Notochord - *Balanoglossus*
 - (C) Metagenesis - *Physalia* and *Obelia*
 - (D) Open circulatory system - *Apis*, *Pila* and *Laccifer*
- (1) A, B and C
 - (2) A and C
 - (3) A, C and D
 - (4) A and B
49. Which one of the following is a matching pair of a body feature and the animal possessing it?
- (1) Canal system - *Asterias*
 - (2) Metagenesis - *Obelia*
 - (3) Dorsal nerve cord - *Pheretima*
 - (4) Muscular pharynx - *Taenia*
50. What is true about *Neries*, *Apis*, *Columba*, *Macropus* and *Chelone*?
- (1) Dorsal hollow nerve cord
 - (2) Ventral solid nerve cord
 - (3) Closed circulatory system
 - (4) Metamerism
51. Which one of the following is a living fossil?
- (1) *Echinus*
 - (2) *Pinctada*
 - (3) *Hirudinaria*
 - (4) *Limulus*
52. Which one of the following is a matching pair of an animal and a certain phenomenon it exhibits :-
- (1) *Octopus* - Metamerism
 - (2) *Hydra* - Metagenesis
 - (3) *Ascaris* - Sexual dimorphism
 - (4) *Pheretima* - Indirect development
53. *Fasciola* belongs to a group of animals. Which are best described as :
- (1) Triploblastic, bilaterally symmetrical and Acoelomates.
 - (2) Dorso-ventrally flattened body
 - (3) Mostly monoecious
 - (4) All of the above

54. Which one of the following group of animals is correctly matched with their two characteristic morphological features?

- (1) *Pavo*, *Camelus*, *Delphinus* - Dorsal hollow nerve cord and poikilothermous
- (2) *Asterias*, *ophiura*, *Balanoglossus* and *Saccoglossus* - Enterocoelomate and Deuterostomic
- (3) *Ascaris*, *Ancylostoma* and *Pheretima* - Pseudocoelomates and metamerism
- (4) *Pila*, *Octopus*, *Apis* and *Bombyx* - Open circulatory system and Dorsal nerve cord

Chordata

55. Which one of the following pair of animals belongs to 'Cartilaginous fishes'?

- (1) *Labeo* and *Catla*
- (2) *Pterophyllum* and *Scoliodon*
- (3) *Pristis* and *Carcharodon*
- (4) *Petromyzon* and *Myxine*

56. Select the incorrect statement from the following :

- (1) Cyclostomates have an elongated body bearing 6-15 pairs of gill slits
- (2) All chordates are vertebrates
- (3) Bony fishes have four pairs of gills with operculum
- (4) Reptiles are poikilotherms.

57. Which one of the following is a correct matching set of class and its examples?

- (1) Mammalia - *Ornithorhynchus*, *Pteropus* and *Aptenodytes*.
- (2) Reptilia - *Chameleon*, *Calotes*, *Neophron*
- (3) Amphibia - *Rana*, *Ichthyophis*, *Crocodilus*
- (4) Osteichthyes - *Clarias*, *Pterophyllum*, *Catla*

58. What is common about *Corvus*, *Columba*, *Camelus* and *Elephas* ?

- (1) They are viviparous and development is direct
- (2) They are homiothermous animals and have 12 pairs of cranial nerves.
- (3) The digestive tract of these animals has additional chambers, the crop and gizzard.
- (4) They have dicondylic skull.

59. Which one of the following characters is not typical of the class Aves ?

- (1) The long bones are hollow with air cavities.
- (2) They are oviparous and development is direct.
- (3) Air sacs connected to lungs supplement respiration
- (4) The Avian skin is moist with scales.

60. What is true for Reptilia ?

- (1) They have external ear opening
- (2) Sexes are separate and fertilization is external
- (3) Both 1 and 2

(4) Snakes and lizard shed their scales as skin cast

61. Reptiles are considered as the first amniote animals. They possess which of the following common characters?

- (1) Tympanum represents ear. They do not have external ear opening
- (2) Heart is usually four chambered.
- (3) Both 1 and 2
- (4) They are oviparous and development is indirect.

62. *Rana* and *Hyla* are the members of class-Amphibia bearing which of the following characters?

- (1) A tympanum represents the ear.
- (2) These are cold blooded animals.
- (3) They have moist skin without scales.
- (4) All of these

63. The biological name and their popular common name of animals are given below, select the correctly matched among the following ?

- (1) *Trygon* - Saw Fish
- (2) *Carcharodon* - Great white shark
- (3) *Ornithorhynchus* - Penguin
- (4) *Clarias* - Fighting Fish

64. The members of class osteichthyes are called bony fishes having numerous distinguishable character but which of the following can not be considered as their character?

- (1) Skin is covered with cycloid / Ctenoid scales.
- (2) Air bladder is present which regulates buoyancy.
- (3) In males pelvic fins bear claspers
- (4) Mouth is mostly terminal

- 65.** Members of class Reptilia, Aves and mammalia are amniotes and have a lot of common feature, but they differ from each other remarkably, select the common features among them :-
 (1) They have 12-Pairs of cranial nerves.
 (2) One pair of metanephric kidney help in excretion
 (3) They are dioecious and fertilization is internal
 (4) All of these
- 66.** Corvus, Psittacula and Pavo are the members of class Aves. Select the characters those are exclusively found in class-Aves :-
 (1) A cover of soft feathers is present all over the body of all the birds.
 (2) They are warm-blooded.
 (3) They are oviparous and development is direct.
 (4) They have 4-chambered heart
- 67.** Distinguishing characters of mammals are :-
 (1) Diaphragm is present in the body cavity.
 (2) Mammary glands are found in females for baby feeding.
 (3) Their body is covered by a coat of hair.
 (4) All of these
- 68.** Select the distinguishable characters of Reptiles from Amphibians ?
 (1) Cranial nerves are 12 pairs
 (2) Monocondylic skull
 (3) An amniotes
 (4) All of these
- 69.** Which one of the following statements about all the four of *Bufo*, *Rana*, *Rattus* and *Camelus* is correct?
 (1) All are poikilotherms
 (2) All have 12 pairs of cranial nerve
 (3) All have dicondylic skull
 (4) Sexes are separate and fertilisation is internal
- 70.** Which one of the following is not a characteristic of cyclostomates?
 (1) Cyclostomates have a sucking and circular mouth without jaws.
 (2) Cranium and vertebral column are bony
 (3) Circulation is closed type
 (4) Cyclostomates are marine but migrate for spawning to fresh water.
- Which of the following pair are correctly matched?
 (A) Protochordates - *Lancelet*
 (B) Amniotes - *Struthio*, *Aptenodytes*, *Chelone*, *Equus*
 (C) Cartilaginous Fishes - *Scoliodon*, *Trygon*, *Hippocampus*
 (D) Tunicates - *Salpa*, *Doliolum*, *Ascidia*
 (1) A, B and D (2) A, C and D
 (3) A, B and C (4) Only A and B
- 72.** Which one of the following class is correctly matched with its general characteristics?
 (1) Aves - The hind limbs generally have scales and are modified for walking.
 (2) Reptilia - 10 pairs cranial nerves and dicondylic skull
 (3) Cyclostomata - Skin is covered with scales.
 (4) Osteichthyes - Gill slits are separate and without operculum.
- 73.** What is true about *Psittacula*, *Omithorhynchus* and *Crocodylus*?
 (1) Four - Chambered heart
 (2) Oviparous
 (3) 12 pairs of cranial nerve
 (4) All of these
- 74.** Select the distinguishable characters of cyclostomata from Pisces :-
 (1) Their body is devoid of scales and paired fins.
 (2) Cyclostomates include jaw less fishes.
 (3) Internal ear contains one or two semicircular canals
 (4) All of these
- 75.** Which one of the following is a matching pair of body feature and the animal possessing it?
 (1) Vertebral column - *Salpa*, *Petromyzon*
 (2) Gnathostomata - *Corvus*, *Myxine*
 (3) Air bladder - *Labeo*, *Pristis*
 (4) Pneumatic bones - *Corvus*, *Columba*
- 76.** *Pristis* and *Carcharodon* are the members of class chondrichthyes, bearing which of the following characters?
 (1) Air bladder is present.
 (2) Respiration by 4-pairs of gills and these gills are covered by operculum.
 (3) Male fishes have 'claspers' as copulatory organ so that fertilization is internal.
 (4) All of these

77. Which of the following fish is also known as "Great white shark"?

- (1) *Pristis* (2) *Trygon*
(3) *Clarias* (4) *Carcharodon*

78. Select the correct statement from the following :-

- (1) In Amphibians endoskeleton is fully ossified and the long bones are hollow with air cavities.
(2) Body of most of mammals is divided into head, neck, trunk and tail.
(3) Reptiles and Birds are warm blooded.
(4) All of the above

79. Which one of the following groups of animals each is correctly matched with their characteristic feature?

- (1) *Rana*, *Clarias*, *Testudo*, *Struthio* - Poikilothermous
(2) *Chameleon*, *Psittacula*, *Salamendra* - Amniotes
(3) *Corvus*, *Columba*, *Camelus*, *Elephas* - Dicondylic skull
(4) *Naja*, *Bungarus*, *Viper* - Poisonous snake

80. Match list-I with list-II and select the correct answer using the codes given below the lists :-

List-I (Name of the Animal)	List-II (The group to which they belong)
A. Sting ray	(i) Amphibia
B. Alligator	(ii) Chondrichthyes
C. <i>Ichthyophis</i>	(iii) Reptilia
D. <i>Doliolum</i>	(iv) Tunicata
	(v) Osteichthyes

- | A | B | C | D |
|----------|-------|------|-------|
| (1) (v) | (ii) | (i) | (iv) |
| (2) (ii) | (iii) | (i) | (iv) |
| (3) (i) | (ii) | (v) | (iii) |
| (4) (v) | (iii) | (iv) | (i) |

81. Amphibians are considered to be intermediate between Pisces and Reptilia because :-

- (A) They possess vertebral column
(B) Both branchial and pulmonary respiration occur in their life history.
(C) Oviparity and viviparity are represented.
(D) They have 3-chambered heart.

Select the correct answer using the codes given below?

- (1) A and C (2) B and D
(3) A and B (4) C and D

82. Presence of notochord, dorsal tubular nerve cord and pharyngeal gill slits are the three fundamental characters of the phylum chordata.

In which one of the following chordate all the three characters are found throughout the life?

- (1) *Doliolum*
(2) *Ascidia*
(3) *Balanoglossus*
(4) *Branchiostoma*

83. Consider the following features :-

- (A) Anadromous migration.
(B) Absence of jaws.
(C) Ectoparasites on Fishes.
(D) Larval stages are Fresh water

Which of the following animal has all the above mentioned features?

- (1) *Doliolum*
(2) *Herdmania*
(3) *Petromyzon*
(4) *Amphioxus*

84. Which one of the following is neither a Fish nor a snake but an amphibian?

- (1) Cuttle fish (2) Hag Fish
(3) *Ichthyophis* (4) *Horned toad*

Animal Kingdom

85. Which one of the following animals requires comparatively less energy for body maintenance?

- (1) Camel (2) Bird
(3) Fish (4) Elephant

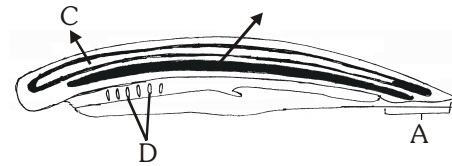
86. Match list-I (Animals) with list-II (Organ of locomotion) and select the correct answer using the codes gives below the lists :-

List-I	List-II
A. Star fish	(i) Muscular foot
B. Apple snail	(ii) Comb plates
C. <i>Nereis</i>	(iii) Tubefeet
D. Sea walnuts	(iv) Parapodia

- | A | B | C | D |
|-----------|-------|------|------|
| (1) (iii) | (i) | (ii) | (iv) |
| (2) (iii) | (ii) | (i) | (iv) |
| (3) (iv) | (iii) | (ii) | (i) |
| (4) (iii) | (i) | (iv) | (ii) |

87. Which one of the following is a molluscan?
- (1) Sea horse (2) Sea lily
(3) Sea mouse (4) Sea hare
88. Metameric segmentation in the animal hierarchy first developed in phylum?
- (1) Ctenophora
(2) Chordata
(3) Annelida
(4) Arthropoda
89. Which of the following pairs of respiratory structures and animals is/are correctly matched?
- (A) Ctenidia - Honey bee
(B) Book lungs - Scorpion
(C) Tracheal system - *Sepia*
(D) Book gills - *Limulus*
- (1) A and B (2) B and C
(3) B and D (4) B, C and D
90. Presence of calcareous plates in the dermis in the adult and a free swimming bilaterally symmetrical larva are typical characteristics of :-
- (1) Annelida (2) Arthropoda
(3) Mollusca (4) Echinodermata
91. Consider the following statements :
- Hydra* typically has
- A. A radially symmetrical body
B. A gastrovascular cavity
C. Both a polyp and medusoid form.
- (1) A, B and C are correct
(2) B and C are correct
(3) A and B are correct
(4) A and C are correct
92. Which of the following insects is/are considered as vectors ?
- (1) *Culex* (2) *Aedes*
(3) *Anopheles* (4) All of the above

93.



A schematic representation of a typical chordate is shown in the above figure.

The structures marked A, B, C and D are respectively :-

- (1) Notochord, Nerve cord, Intestine and gill slits
(2) Postanal part, Gill slits, Nerve cord and Notochord
(3) Postanal part, nerve cord, Notochord and Gill
(4) Post anal part, Notochord, Nerve cord and Gill slits.

94. Consider the following statements :-

- (A) *Aptenodytes* belongs to the class Aves.
(B) Locomotory organelle of *Trypanosoma* is flagella.
(C) *Euspongia* is common bath sponge.
(D) Coelenterates are pseudocoelomates.

Which of the above statements is/are correct ?

- (1) C alone (2) B and C
(3) A, B and C (4) B, C and D

95. Which one of the following features is not applicable to all the three helminths - *Taenia*, *Fasciola* and *Planaria*?

- (1) Triploblastic forms
(2) Absence of metamerism
(3) Parasitism
(4) Absence of definite circulatory and respiratory systems.

96. Which one of the following pairs is not correctly matched?

- (1) *Chaetopleura* - Chiton
(2) *Ascaris* - Round worm
(3) *Wuchereria* - Filarial worm
(4) *Enterobias* - Hook worm

97. Most of lower aquatic animals such as protozoans, poriferans, coelenterates etc. are ammonotelic, because :-
- (1) Water available to these animals contains less nitrogen.
 - (2) Ammonia can be converted into urea.
 - (3) Excretion of ammonia requires large amount of water, which is available to these animals.
 - (4) Ammonia helps in checking inflow of water into body.
98. Which of the following statements regarding mammals are correct?
1. *Delphinus* and *Balaenoptera* are aquatic mammals.
 2. *Ornithorhynchus* is oviparous
 3. Mammals have double occipital condyles.
- Select the correct answer :-
- (1) 1, 2 and 3
 - (2) 1 alone
 - (3) 1 and 2 only
 - (4) 2 and 3 only
99. Which one of the following endoparasite absorbs nutrients from the host directly through their body surface?
- (1) *Fasciola*
 - (2) *Ascaris*
 - (3) *Taenia*
 - (4) All of the above
100. Reptiles, Birds and Mammals resemble in the character of their :-
- (1) Occipital condyle
 - (2) Homeothermous
 - (3) Poikilothemous
 - (4) Amnion
101. The symmetry of coelenterates is similar to that of :-
- (1) Larvae of a phylum, whose members possess canal system.
 - (2) Larvae and adults of a phylum whose member possess a water vascular system.
 - (3) Adults of a phylum whose members possess a spiny body wall and dermal calcareous ossicle.
 - (4) All of the above
102. Echinoderms are considered to be the most evolved invertebrates because they :-
- (1) Are triploblastic and have organ system level of organisation
 - (2) Have a great power of regeneration
 - (3) Both 1 and 2
 - (4) Are enterocoelic and deuterostomic
103. Which one of the following is a bilaterally symmetrical, blind sac body plan and triploblastic and acoelomate invertebrate?
- (1) *Ascaris*
 - (2) *Wuchereria*
 - (3) *Hydra*
 - (4) *Fasciola*
104. With reference to scorpions, which one of the following statements is correct ?
- (1) The body consists of head, Thorax and abdomen
 - (2) They display mosaic and stereoscopic vision.
 - (3) They have book lungs which corresponds to the gills of prawn.
 - (4) All of the above
105. Consider the following characteristics of organisms
- (A) Diploblastic body
 - (B) Possessing cnidocytes
 - (C) Presence of both intracellular and extracellular digestion.
- Which of the above are characteristics of organism of coelenterata?
- (1) A and B
 - (2) B and C
 - (3) A and C
 - (4) A, B and C
106. Metagenesis in Obelia signifies by :-
- (1) Alternation of generation between haploid medusa and diploid polyp.
 - (2) Polyps produce medusae sexually and medusae form the polyps asexually.
 - (3) Alternation of generation between diploid medusa and diploid polypoid.
 - (4) All of the above
107. Match list-I with list-II and select the correct answer:
- | List-I
(Animal) | List-II
(Type of coelom) |
|--------------------|-----------------------------|
| A. Echinodermata | (i) Coelom absent |
| B. Arthropoda | (ii) Haemocoel |
| C. Aschelminthes | (iii) Enterocoelous coelom |
| D. Annelida | (iv) Pseudo coelom |
| | (v) Schizocoelous coelom |
- | | | | |
|-----------|----------|----------|----------|
| A | B | C | D |
| (1) (iii) | (i) | (v) | (iv) |
| (2) (iii) | (ii) | (v) | (iv) |
| (3) (iii) | (ii) | (iv) | (v) |
| (4) (ii) | (i) | (iii) | (v) |

108. Consider the following statements :

During the alternation of generation or Metagenesis in dimorphic coelenterates, the medusae are necessarily :

- (A) Free living
- (B) Sedentary
- (C) Medusae form the polyps asexually
- (D) medusae form the polyps sexually

- (1) A, C and D are correct
- (2) A and D are correct
- (3) A and C are correct
- (4) B and C are correct

109. Which of the following types of protozoans may be responsible for the origin of sponges?

- (1) Amoeboid protozoans
- (2) Flagellated protozoans
- (3) Ciliated protozoans
- (4) Sporozoans

110. In which one of the following protochordate, notochord present from head to the tail in adult stage.

- (1) *Ascidia*
- (2) *Salpa*
- (3) *Doliolum*
- (4) *Branchiostoma*

111. In the evolutionary history of the animal kingdom, which of the following features have evolved for the first time in phylum annelida?

- 1. Metameric segmentation
- 2. organ system level of organisation
- 3. Closed circulatory system
- 4. True coelom
- 5. Bilateral symmetry

Select the correct answer -

- (1) 1, 2 and 5
- (2) 1, 2, 3 and 4
- (3) 1, 3 and 4
- (4) only 1 and 2

112. Select the correctly matched example of Bony fishes with their common names :-

- (1) *Betta* - Fighting fish
- (2) *Clarias* - Magur
- (3) *Pterophyllum* - Angel fish
- (4) All of the above

113. Select the incorrectly matched animals with their common names :-

- (1) *Ophiura* - Brittle star
- (2) *Ancylostoma* - Hookworm
- (3) *Aptenodytes* - Penguin
- (4) *Meandrina* - Stag - horn coral

114. *Exocoetus*, *Bufo* and *Labeo* on one hand and *Elephas*, *Psittacula* and *Columba* on the other differ in the following ?

- (1) The body temperature of the former changes with environmental temperature, the temperature of the latter remains more or less constant.
- (2) The former have mesonephric kidney, The latter have metanephric kidney.
- (3) Both 1 and 2
- (4) The former are oviparous, the latter are viviparous

115. Which of the following sets of animals belong to the same group ?

- (1) *Bangarus*, *Testudo*
- (2) *Pavo*, *Hyla*
- (3) *Clarias*, *Rana*
- (4) *Felis*, *Calotes*

116. Identify true statements :

- (A) Cnidarians have blind-sac body plan
 - (B) Digestion in Ctenophora is both intra as well as extracellular
 - (C) Agnathans are endoparasite in fishes.
 - (D) *Ichthyophis* belongs to tetrapoda group
- (1) A, C and D
 - (2) A, B and D
 - (3) B and D
 - (4) A and D

- ▼ **117.** Identify the correct statements from the following with reference to the cartilaginous fishes :
- (A) Male pectoral fin bears claspers
(B) Teeth are modified cycloid scales
(C) Air bladder is absent
(D) They have internal fertilization
- (1) A and B (2) B and C
(3) C and D (4) A and D
- 118.** Over two third of all named species on earth are Arthropods. Identify their category which is not matching
- (1) Living fossil - King crab
(2) Vector - *Culex*
(3) Gregarious pest - *Limulus*
(4) Economically important - *Apis*
- 119.** Identify correct statements :
- (A) Fertilization is internal in *Ascaris*
(B) Parapodia help in swimming in few Arthropods
(C) *Nereis* is an aquatic form and it is monoecious
(D) Radula is a rasping organ of star fish
- (1) A and C (2) B and C
(3) D only (4) A only
- 120.** In which of the following animals muscular pharynx is more distinct ?
- (1) *Taenia*
(2) *Ancylostoma*
(3) *Loligo*
(4) *Fasciola*
- 121.** Identify incorrect statement with regard to Coelenterata
- (1) Sea anemone is a polyp
(2) Jelly fish is free swimming Coelenterate
(3) *Meandrina* exhibit two basic body forms called polyp and medusa
(4) Digestion is both extracellular and intracellular
- 122.** Identify correct statement :
- (1) Fertilization is internal in Ctenophora
(2) Clasper is a modified form of scales in Scoliodon (Dog fish)
(3) Cyclostomates have teeth and body is scale less
(4) Radula is a rasping organ of Arthropods
- 123.** In osteichthyes group :
- (1) Fertilization is internal
(2) Placoid scales are more
(3) Gill cover is found
(4) Air bladder is absent
- 124.** Acraniates are those lower Chordates which posses
- (1) Unpaired appendages
(2) Cranium and vertebrae
(3) Paired appendages
(4) Jaws and exoskeleton
- 125.** A phylum which has triploblastic, Acoelomate and Blind-sac body plan is :
- (1) Ctenophora (2) Platyhelminthes
(3) Coelenterata (4) All of the above
- 126.** First phylum to have complete digestive tract can be represented by :
- (1) *Taenia* (2) *Wuchereria*
(3) *Pheretima* (4) *Apis*
- 127.** Which of the following animals belong to same group ?
- (1) *Hyla*, *Aedes*, *Crab*,
(2) Sea urchin, Sea lily, Sea cucumber
(3) Sea pen, Sea fan, Sea hare
(4) Sand worm, Round worm, *Earthworm*
- 128.** The phenomenon of Autotomy and regeneration is well marked in :
- (1) Mollusca (2) Annelida
(3) Arthropoda (4) Echinodermata
- 129.** Which one is not a correct statement ?
- (1) The Larva of *Scoliodon* exists
(2) Lateral line is absent in *Bangarus*
(3) Air bladder is present in *Betta*
(4) All Chordates are deuterostomes
- 130.** Which of the following trait does not relate to Class-Reptilia ?
- (1) *Calotes* is a garden lizard
(2) Fertilization is always internal
(3) Body is covered with glandular skin
(4) They have copulatory organs.

- 131.** Which one of the following bird is different from rest of the birds ?
 (1) *Neophron* (2) *Aptenodytes*
 (3) *Psittacula* (4) *Corvus*

132. Which of the following statement is/are true for birds
 (A) Hind limb are partially modified into wings.
 (B) Humming bird is exceptionally viviparous
 (C) Fertilization is internal.
 (D) Air sac connected to lung supplement respiration
 (1) A, B (2) B, C (3) A, D (4) C, D

133. Which of the following is correct pair ?
 (1) *Struthio* – Vulture
 (2) *Chameleon* – Garden lizard
 (3) *Chelone* – Turtle
 (4) *Betta* – Flying fish

134. Which of the following is correct pair ?
 (1) *Hyla* – Coelenterate
 (2) *Pteropus* – Flying fish
 (3) *Doliolum* – Protochordate
 (4) *Carcharodon* – Bony fish

135. Which one of the following set of animal will have bronchial respiration ?
 (1) Prawn, *Cyclops* (2) Spider, *Cyclops*
 (3) *Clarias*, Pavo (4) Fish, *Ichthyophis*

136. Which one of the following set of animal will have tracheal respiration.
 (1) Silk worm, *Laccifer*
 (2) *Limulus*, Prawn
 (3) Spider, *Cyclops*
 (4) *Apis*, King crab

137. Which one of the following statement is true?
 (1) All members of Bilateria are always Deuterostomes
 (2) Eumetazoan are Deuterostomes
 (3) All acoelomates are Diploblastic
 (4) All Haemocoelomates are bilateral symmetrical

138. The mammal which posses both reptilian and mammalian Characters is ?
 (1) *Macropus*
 (2) Scaly ant eater
 (3) *Ornithorhynchus*
 (4) *Ichthyophis*

139. Identify false statements :
 (A) Cyclostomates are ectoparasite on true fishes
 (B) Ctenophores are sessile and bear Cnidocytes
 (C) Aschelminthes included parasitic as well as non-parasitic round worms
 (D) Arthropods are most abundant group with Calcareous exoskeleton.
 (1) B, D (2) A, B
 (3) C, D (4) A, D

140. Which of the following animal belongs to the correct class ?
 (1) *Euglena* – Ciliata
 (2) *Paramecium* – Flagellata
 (3) *Plasmodium* – Sporozoa
 (4) *Entamoeba* – Mastigophora

141. Identify the true statement :
 (1) Protozoans are mostly heterotrophic animals
 (2) Water enters inside the body through the osculum in sponges.
 (3) Ctenophores are fresh water animals
 (4) All parasites are triploblastic

142. Identified the incorrect statement from the following with reference to round worm :
 (A) Syncytial epidermis
 (B) Most and free livings of ectoparasites
 (C) All parasites are unisexual
 (D) Incomplete alimentary canal
 (1) A and B (2) B and C
 (3) B and D (4) A and D

143. Identify the correct statement :
 (1) Gills of the bony fishes are covered by operculum
 (2) Alimentary canal of amphibian opens outside through anus at posterior end
 (3) Crocodile has three chambered heart
 (4) Birds are poikilotherm animals

144. Presence of canal system is characteristic feature of
 (1) *Ascaris* (2) *Euspongia*
 (3) *Pila* (4) *Amphioxus*

✓ **145.** In which of the following fishes, jaws are absent?

- (1) *Exocoetus* (2) *Hippocampus*
(3) *Myxine* (4) *Trygon*

146. In which of the following flat worm, segmented body is found?

- (1) Liver fluke (2) Tape worm
(3) Filarial worm (4) Sand worm

147. Which of the following is not the feature of Mollusca phylum?

- (1) It is the second largest phylum of animal kingdom.
(2) Muscular foot for locomotion.
(3) They are acoelomate animals.
(4) Presence of shell around the body.

148. Which of the following pair is correct ?

- (1) Parapodia - Leech
(2) Flagella - *Ascaris*
(3) Archacocyte - *Obelia*
(4) Antenna - *Anophelese*

149. Which of the following phylum is pseudocoelomate?

- (1) Cnidaria
(2) Ctenophora
(3) Platyhelminthes
(4) Aschelminthes

150. Which of the following statements is incorrect ?

- (1) Polyp is asexual stage
(2) Photosynthesis take place in *Englena* during day time
(3) Sleeping sickness is caused by *Leishmania*
(4) Tentacles are locomotory organ of coelenterates

151. Which of the following statement is correct for hemichordates?

- (A) Fish like body
(B) Body is triploblastic
(C) Body is divided into two parts
(D) Excretion through proboscis gland
(1) A and B (2) B and C (3) A and C (4) B and D

152. In which of the following group notochord is present in whole life?

- (1) Hemichordata (2) Urochordata
(3) Cephalochordata (4) Vertebrata

153. In which of the following animals respiration takes place by book lungs?

- (1) Honey bee (2) Silk worm
(3) Scorpion (4) Grass hopper

154. Which of the following is a correctly matched pair?

- (1) *Ophiura* - Sea lily
(2) *Octopus* - Cuttle fish
(3) *Torpedo* - Electric ray
(4) *Aptenodytes* - Ostrich

155. Which of the following groups belongs to cold blooded animals ?

- (A) Chondrichthyes (B) Amphibia
(C) Aves (D) Mammalia
(1) A and C (2) B and D
(3) C and D (4) A and B

156. Which of the following bird is flight less?

- (1) Pigeon (2) Ostrich
(3) Crow (4) Peacock

157. Which of the following is not feature of Cartilaginous fishes?

- (1) Presence of placoid scales
(2) Notochord present whole life
(3) Three chambered heart
(4) Sexes are separate

158. In amphibians, cloaca is the common opening for

- (1) Alimentary canal
(2) Urinary tract
(3) Reproductive tract
(4) All of the above

159. Reptiles are most successful land vertebrate. Which type of locomotion is found in them?

- (1) Jumping (2) Saltatorial
(3) Crawling (4) None of the above

160. Which of the following group of the animals belongs to the same class ?

- (1) *Chelone*, *Corvus* (2) *Macropus*, *Myxine*
(3) *Loligo*, *Octopus* (4) *Bombyx*, *Peripatus*

161. Monkey, Lion, Bat, Kangaroo are classified in same

- (1) Order (2) Family
(3) Class (4) None of the above

- (1) Huxley (2) John Ray
(3) Lamarck (4) Linnaeus

163. Which type of locomotory organ are found in "Soft bodied animals" ?

- (1) Cilia (2) Tube feet
(3) Tentacles (4) Muscular Foot

164. Match the column-I with the column-II and find out the correct answer :

Column-I	Column-II
(A) Spongocoel	(i) Arthropoda
(B) Dorso-ventrally flattened body	(ii) Cnidaria
(C) Coelenteron	(iii) Porifera
(D) Chitinous exoskeleton	(vi) Platyhelminthes

- (1) A-iii, B-iv, C-i, D-ii (2) A-iv, B-iii, C-ii, D-i
(3) A-iii, B-iv, C-ii, D-i (4) A-ii, B-iv, C-iii, D-i

ANSWERS KEY

[illegible]