

Subject: Computer Science

Class:6th



Chapter-3
Basics of Working with Computers

Fill in the blanks

Short Answer Type Questions

Long Answer Type Questions

Fill in the Blanks

1. Screen appeared after login of computer is called:-

- a. Start Menu
- b. Desktop
- c. Taskbar
- d. None of these

b. Desktop



2. All the deleted files go to?

- a. My Computer
- b. Network
- c. Recycle Bin
- d. All of the above

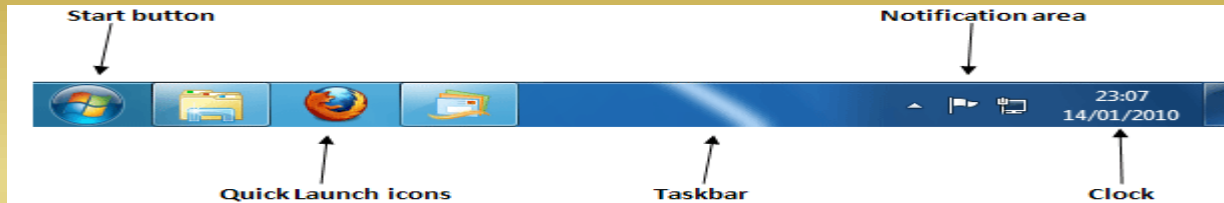
c. Recycle Bin



3. Which part of windows remains visible all the time when we use other applications?

- a. Recycle Bin
- c. Taskbar

- b. Desktop
- d. None of these



c. Taskbar

4. Which one is an example of “Operating System”:-

- a. Windows
- c. DOS

- b. Android
- d. All of the above



d. All of the above

5. To open a file, we can double click on:-

- a. File itself
- b. Shortcut of File
- c. Both a and b
- d. None of these

c. Both a and b

Short Answer Type Questions

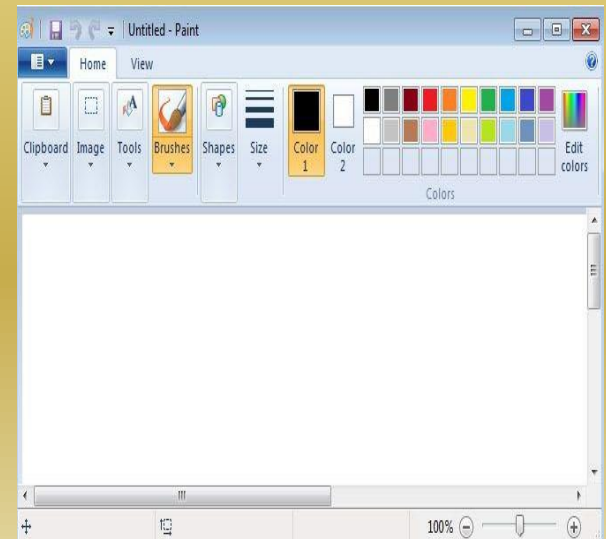
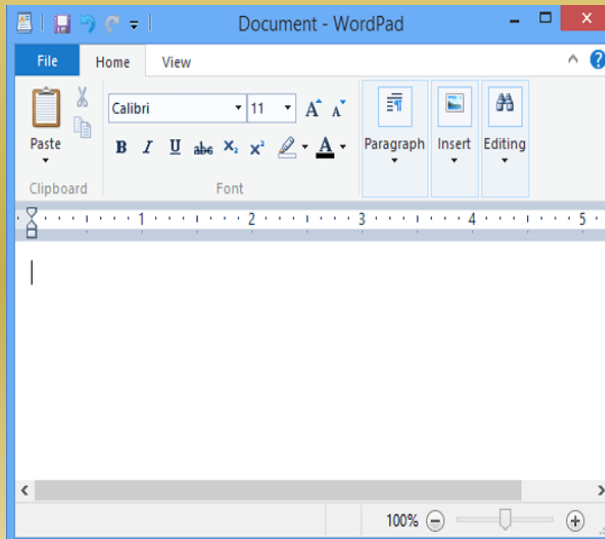
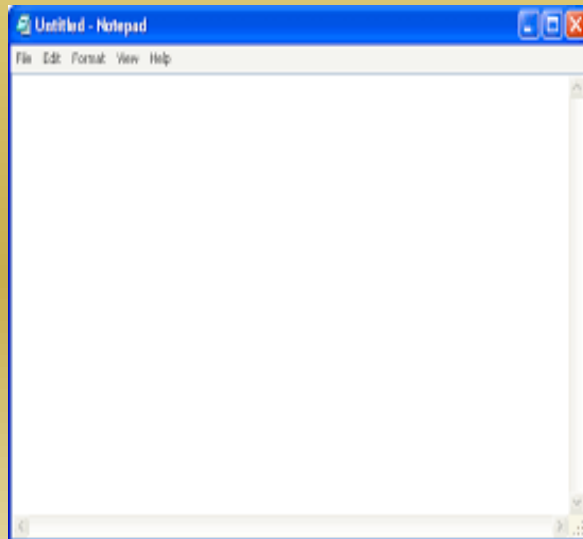
1. Write the name of any three windows applications.

Ans: The names of windows applications are as following:-

1. Notepad

2. WordPad

3. Paint



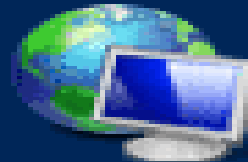
2. Write the name of any three Icons.

Ans: The name of icons are as following:-

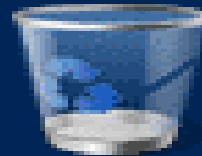
- 1. My Computer**
- 2. Network**
- 3. Recycle Bin**



Computer



Network

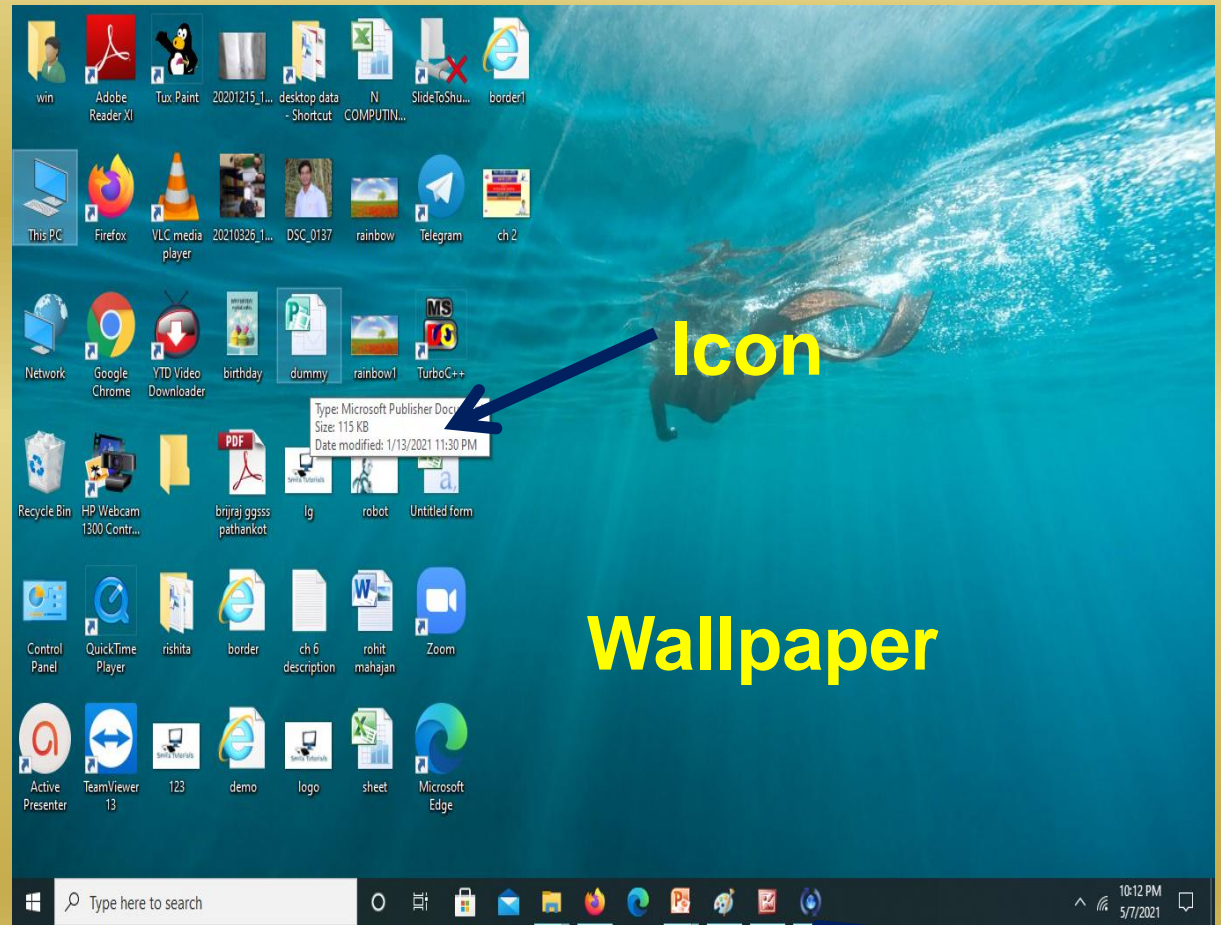


Recycle Bin

3. Write the names of components of a desktop.

Ans.: The components of desktop are as following:-

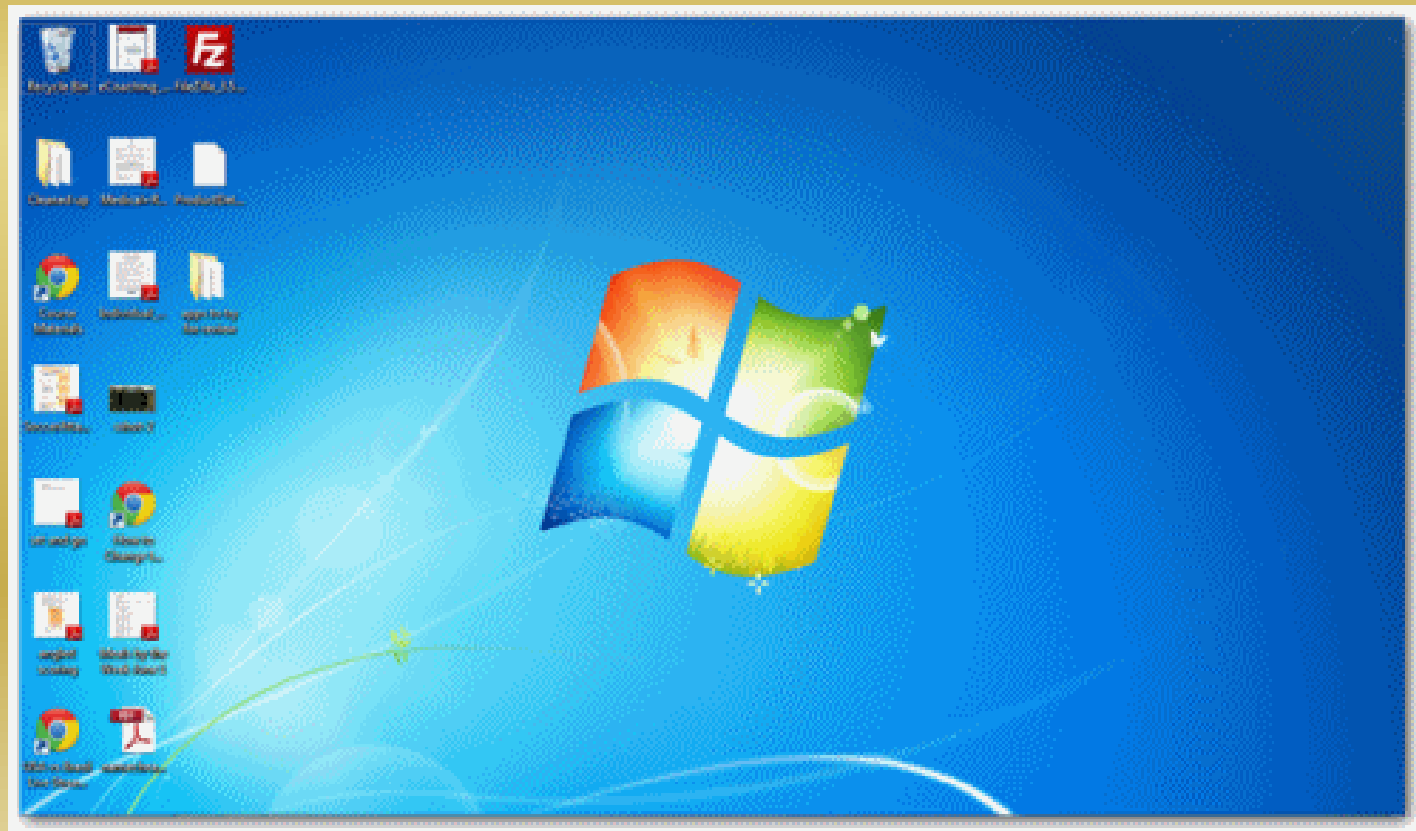
1. Icon
2. Taskbar
3. Wallpaper



Taskbar

4. What is Desktop?

Ans.: The basic screen of computer is called desktop. It is the very first screen that we see after turn on the computer. All programs of windows run with the help of desktop.



Long Answer Type Questions

1.What is Operating System? Explain different types of Operating System.

Ans.: It is the part of system software. Without Operating System computer cannot work. It is an interface between user and hardware. For example: MS-DOS, Windows, Unix, Linux etc.



The different types of Operating System are as following:-

1. **DOS**: Its full name is Disk Operating System. It is developed by Microsoft. It is the oldest operating system. It uses Character User Interface(CUI).



2. **Windows**: It is developed by Microsoft company. In this Operating System we use Mouse. It uses Graphical User Interface(GUI). For example: Windows 7, Windows 8, Windows 10 etc.



3. Android: It is a mobile Operating System. It was developed by Google. This Operating System is mostly used in touch screen devices such as Mobiles, Tablets and Smart Televisions.



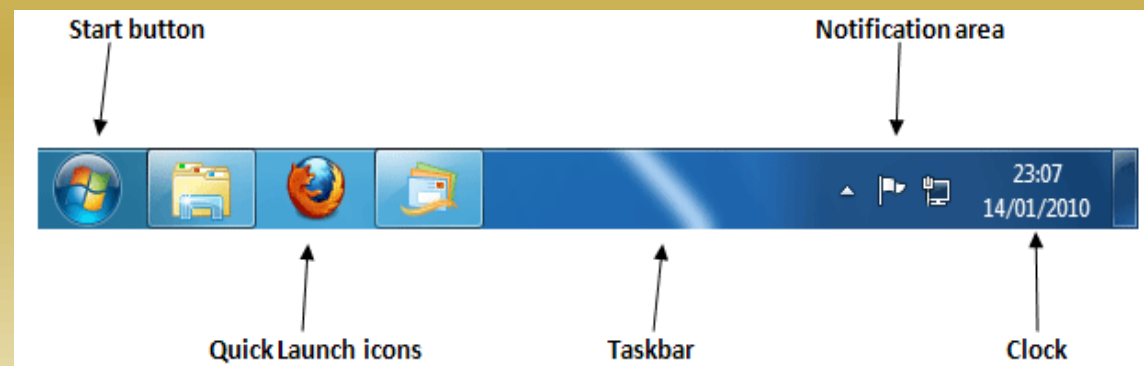
ANDROID

2.What is Task Bar? Explain the functions of its parts.

Ans.: Task Bar is placed at bottom of the desktop. It is thin and horizontal bar. It represents all running programs. It is also called Super Bar.

Parts of Task Bar:-

- 1. Start Button**
- 2. Quick Launch Bar**
- 3. System Tray**
- 4. Notification Area**
- 5. Clock**



1. **Start Button**: With the help of Start button we can run any program or application.
2. **Quick Launch Bar**: It allows us to run any program without using the start button.
3. **System Tray**: It is placed at right side of the Task Bar. With its help we can open the printer, modem and volume options.
4. **Notification Area**: It provides notification and status of devices attached to the computer.
5. **Clock**: It appears on the right side of the Task Bar. It allows us to see the date and time.

3. What do you mean Icon? Explain any three Desktop Icons.

Ans:- Icons are like small pictures on Desktop.

Icons represent folders or files. They act as a button to open any program, folder or file.

Icons are as following:-

- 1. My Computer:** My Computer is a system folder. This icon appears on the desktop. It allows us to view and work with files, folders and drives on our computer.



2. Network: The Network icon appears on the Desktop. It allows us to view our computer's network settings and adjust them according to our requirements.



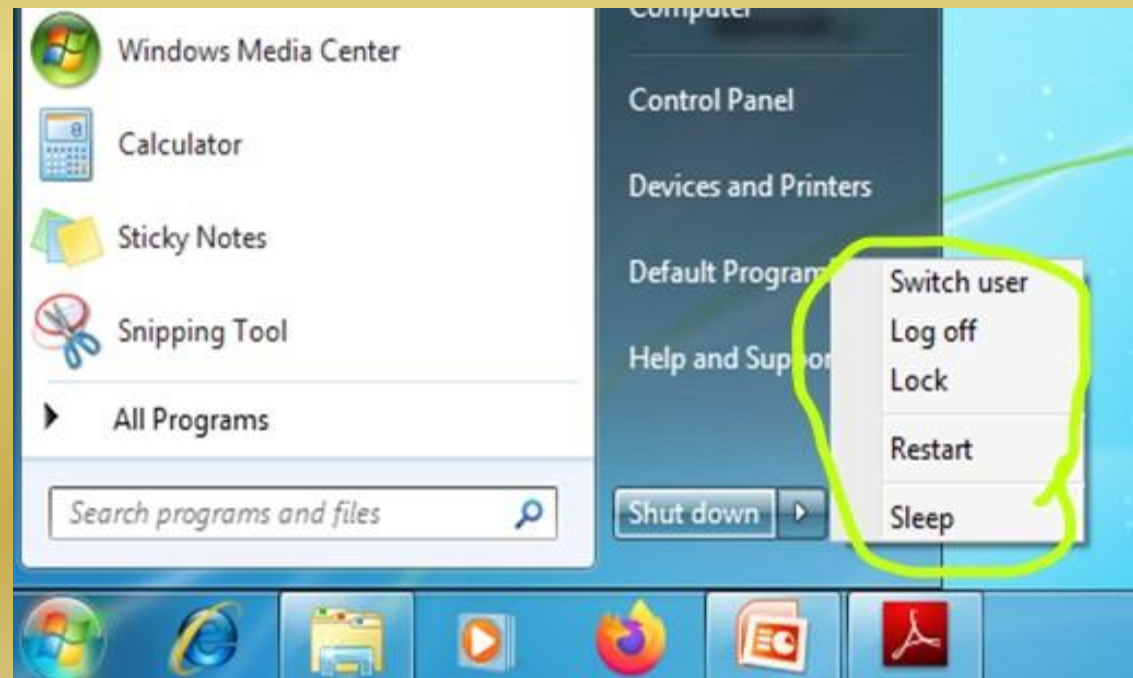
3. User Files: This icon is created by the user according to his requirement. This icon represents the folder of the user files. This folder stores the files created by the user.



3. Explain the different options of “Shutting Down a Computer System”.

Ans: Shut Down is also called Turn Off. This option turns off the computer system. Using this option , we will log out from our user account and it shuts down or close all programs. It has the following options: -

1. Switch User
2. Log Off
3. Lock
4. Restart
5. Sleep



- 1. Switch User:** This option switches to another user account on the computer without closing any previously open programs and windows processes. Both users remain active in such activity.
- 2. Log Off:** With the help of this option, we can end our windows session. It is used to close all the programs and exit the current user.
- 3. Lock:** This option keeps our files safe while we are away from our computer. A locked computer hides and protects programs or documents. It will allow only that person who locked the computer. User can unlock his computer with his user name and password.

4.Restart: This option turns off the computer and then starts again. This is also called Reset or Warm Boot.

5.Sleep: This option puts the computer in low-power consumption mode, which saves power. It is also called Stand By mode. We can click any mouse button or press any key from keyboard to bring the computer back to working condition from power saving mode.