



TEXTILES AND DRESS DESIGNING

Practical



Textiles and Dress Designing Practical

Exercise No.	Chapter Title	Page No.	Month
1	Gathered Frock with Puff Sleeve	248	June
2	In Skirt	251	June
3	Cut Choli	254	July
4	T-Shirt	258	July-Aug
5	Salwar	262	Aug-Sept
6	Kameez	265	September
7	Pyjama	269	October
8	Kalidhar Kurta	272	November
	Project	275	November
	Field Trip	276	December
	Model Question Paper - Practicals	277	December



Gathered Frock with Puff Sleeve

PRACTICAL

01

LEARNING OBJECTIVES

- To develop knowledge in stitching gathered frock with puff sleeve
- To learn the selection of fabric and decorative items used for stitching gathered frock with puff sleeve

Introduction

- Frock with puff sleeve is used for children.
- It can be modified with introduction of yokes, collars and variation in sleeves.

Tools required

Measuring Tools	-	Measuring Tape, Scale.
Drawing Tools	-	Brown Paper, Bell Pin, Table, Pencil.
Marking Tools	-	Tailor's Chalk, Pencil.
Cutting Tools	-	Scissors, Seam Rippers, Fabric Cutting Shears.
Stitching Tools	-	Thread, Hand Needle, Stitching Machine.
Ironing Tools	-	Iron Board, Iron Box.
Fasteners Tools	-	Hook, Press Button.
Decorating Items	-	Applique, Embroidery.

Suitable Materials

Poplin, Printed cotton fabric, Silk and Fancy varieties of synthetic fabric.

Material Requirements

If the width is 90 cms, 150 cm of fabric is needed.

Measurements

AGE	-	3 years
Frock Length	-	56 cm
Chest Circumference	-	60 cm
Shoulder Width	-	24 cm
Bodice Length	-	24 cm
Skirt Length	-	32 cm
Sleeve Length	-	12 cm
Sleeve Circumference	-	16 cm

Drafting

Bodice part (Front & Back)

AB = CD	-	Bodice Length (24 cm)
AC = BD	-	1/4 Chest circumference (15 cm)
A - F	-	Back neck (3 cm)
A - G	-	Front neck (6 cm)
A - E	-	Neck width(6 cm)
E - H	-	1/4 Shoulder width (6 cm)
H - I	-	(12 cm)
J - D	-	(1.5 cm)

Skirt part

AB = CD	-	Skirt Length (32cm)
AC = BD	-	Skirt Width(50 cm)
S - G	-	Straight grain

Sleeve part

AB = CD	-	Sleeve length (12 cm)
AC = BD	-	Half of Upper Sleeve Circumference (16 cm)
C - E	-	1/2 AC (or) BD
F - D	-	1 cm

Cutting lines

Front Bodice Part	-	G, E, H, I, J, B
Back Bodice Part	-	F, E, H, I, J, B

Skirt	-	A, C, D, B
Sleeve	-	A, E, F, B

Garment components

Front Piece	-	1
Back Part	-	2
Skirt (Front and Back)	-	2
Sleeve	-	2

Layout

The fabric is folded in lengthwise centre fold.

Marking and cutting

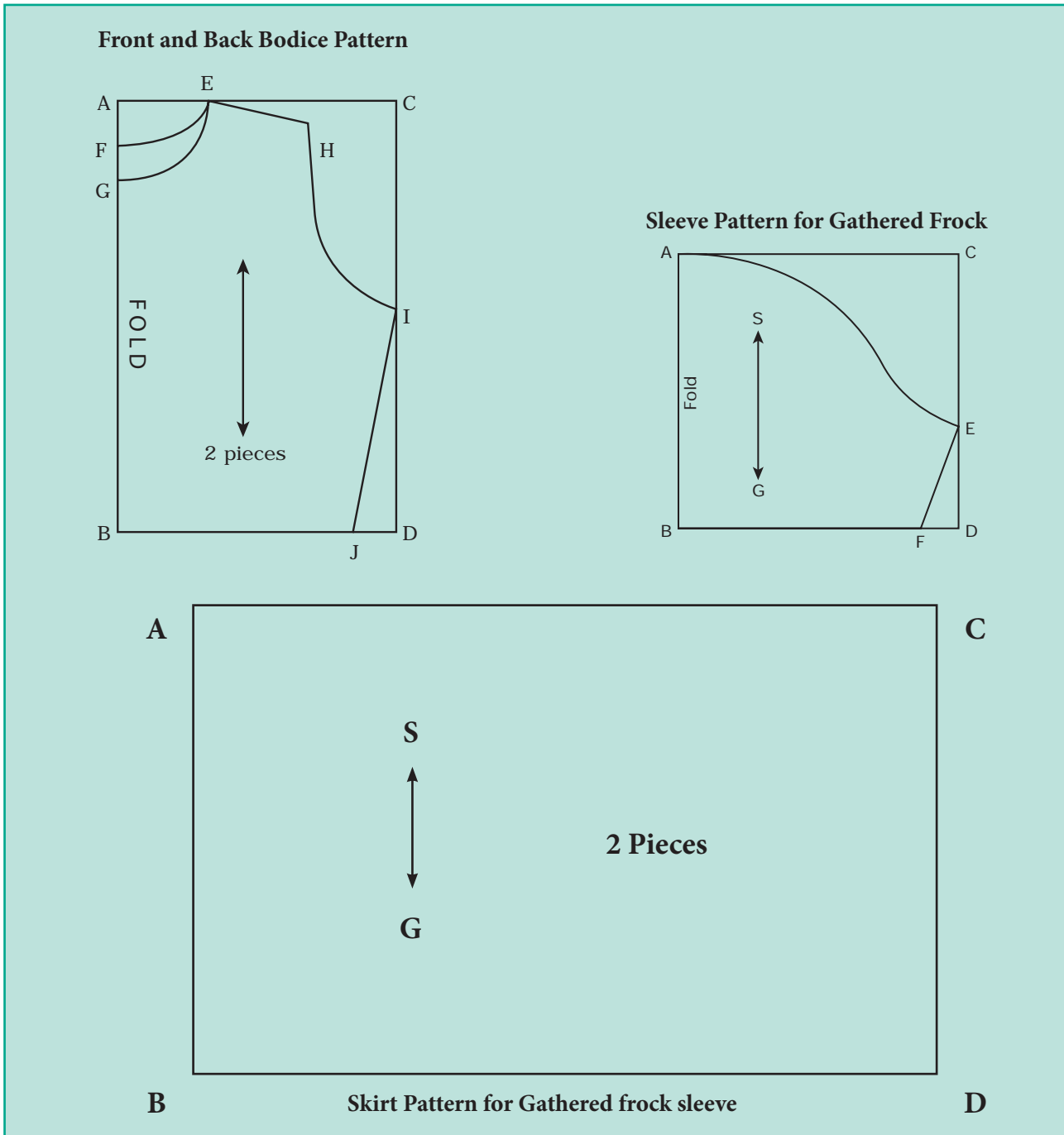
- Mark the cutting lines on the fabric along with seam allowance.

Stitching Method

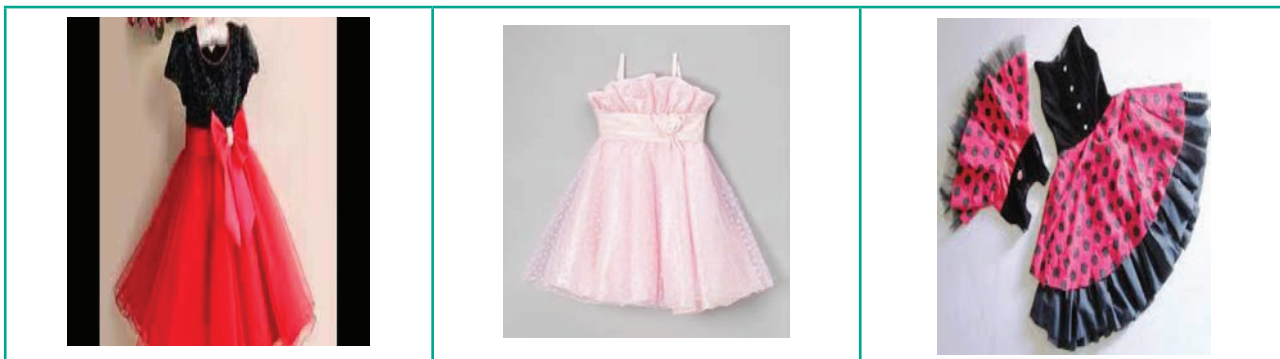
- Attach the front and back bodice.
- Placket should be stitched on the back bodice.
- Sew darts in the required position on the front and back bodice pattern.
- Puff should be stitched on the upper part of the sleeve and attach it with the armhole.
- Finish the neckline with piping.
- Skirt part is stitched with the bodice part introducing required pleats or gathered
- Finish the side seam of frock with french seam.
- Finish the raw edges of skirt with hemming.

Finishing

- Stitch the hook and eyes.
- Trim all the extra threads.
- Fold and iron the frock.



Types of Gathered Frock



Frock with Gathered Skirt

Frock with Short Yoke

Frock with Gathered Frills





Inskirt

PRACTICAL

02

LEARNING OBJECTIVES

- Sewing skills in stitching inskirts.
- Gaining knowledge in selecting material and accessories for the construction of inskirts.

● Introduction

- This is an important inner garment for Women.
- It is used as an inner wear for sarees and skirts.
- It can be stitched by 2, 4, 6 panels also.

Tools Required

Measuring Tools	-	Inch Tape, Scale.
Drawing Tools	-	Brown Paper, Bell Pin, Pencil, Table.
Marking Tools	-	Tailor's Chalk, Pencil.
Cutting Tools	-	Scissors, Seam Rippers, Fabric Shears.
Stitching Tools	-	Thread, Hand Needle, Sewing Machine.
Ironing Tools	-	Iron Table, Iron Box.
Fastening Attachments	-	Elastic Band, Cord.
Decorative Materials	-	Frills, Piping, Scalloped Edges, Embroidery.

Fabric Required

2 meters

Suitable Fabrics

Organic Cotton, Poplin Cloth.

Measurement

Age	-	16 years
Waist	-	88 cm
Full Skirt Length	-	95 cm
Full Skirt Length - Band	-	$95 - 8 = 87$ cm

Note

Cut 10 cm of cloth from 90 cm of the cloth for waist band. **After cutting**, fold the cloth of 80 cm into half as 40 cm.

Drafting

Inskirt

Draw ABCD as rectangle,

AB = CD - Length (87 cm)

AC = BD - 40 cm

AE = DF - $\frac{1}{8}$ Waist Length + 2 cm
Extra Allowance (13 cm)

Join E and F

Mark 1 1/2 cm from AE and DF and draw curve line as shown in the figure.

Cutting lines

A, E, F

Layout

The fabric is folded in combination fold

Marking and cutting

After marking, cut the cloth with seam allowance

Garment components

Centre Piece	-	2
Side Piece	-	4
Waist Band	-	1

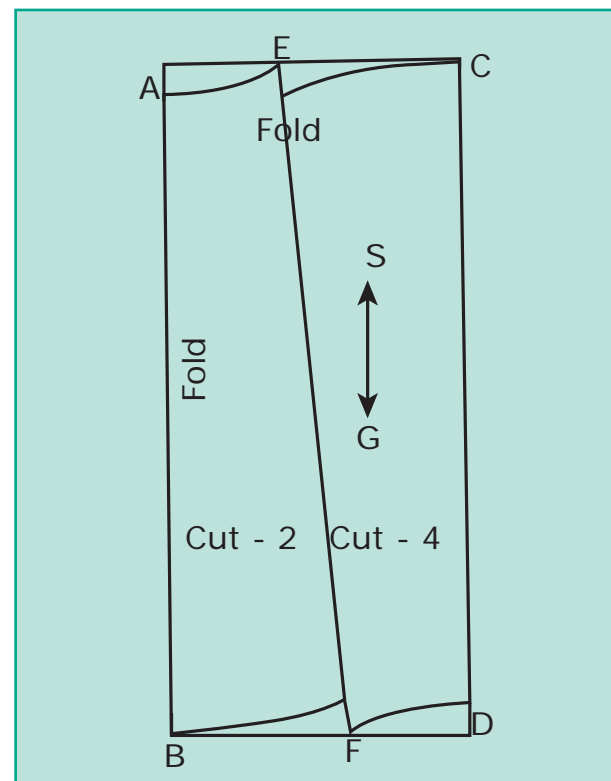
Stitching Method

- Join the side panels with centre panel piece on both sides respectively.
- Join front and back piece together.
- Leave sufficient space for the waist band opening at one side and join the seams.
- Join waist band.
- Hem the bottom and finish the inskirt.

Finishing

- Insert the cord in the waist band.
- Cut the unwanted waste threads.
- Iron the stitched garment for folding.

Inskirt pattern





Types of Inskirt



Four Gore Inskirt

Six Gore Inskirt

Gathered Inskirt





Cut Choli

PRACTICAL

03

LEARNING OBJECTIVES

- To gain the knowledge in stitching cut choli.
- To learn the selection of fabric and types of decorative items to be incorporated in cut choli.

Introduction

- The garment is usually worn by Women.
- It is worn along with saree and half saree.
- It is a tight fitting garment worn according to body size.

Tools required

Measuring Tools	-	Measuring Tape, Scale.
Drawing Tools	-	Brown Paper, Bell Pin, Table, Pencil.
Marking Tools	-	Tailor's Chalk, Pencil.
Cutting Tools	-	Scissors, Seam Rippers, Fabric Shears.
Stitching Tools	-	Thread, Hand Needle, Sewing Machine.
Pressing Tools	-	Ironing Board, Ironing Box.
Fasteners Attachments	-	Press Button, Hook and Eyes.
Decoratives	-	Applique, Embroidery, Lace, Border Design, Stone Work, Jammiki Works

Suitable Fabrics

Voils, Cotton, Silk, Velvet, Huckobha Printed Silk, Umber, 2 x 2 Blouse Materials. These types of fabrics can be used.



Measurements

Age	-	15 Years
Full Length	-	35 cm + 4 cm (for Hem)
Bust Circumference	-	75 cm
Shoulder Width	-	32 cm
Hip Circumference	-	62 cm
Arm (Sleeve) Circumference	-	28 cm
Sleeve Length	-	20 cm

Fabric requirement

Height of garment + twice the length of the sleeve + 5 cm of the fabric is needed (90 cm).

DRAFTING

Front bodice

AB = CD	-	Full Length
AJ = CK	-	Full Length – Cross Belt (8 cm)
AC = BD	-	1/4 of Bust Circumference (19 cm) +5 cm=24 cm
AE	-	Front Neck Depth (10 cm)
A – E	-	Neck Width (7.5 cm)
AG	-	1/2 the Shoulder Width (16 cm)
GH	-	1/6 of Bust Circumferences (14 cm + 2 1/2 cm)
DI	-	2.5 cm
JB – KD	-	Waist Band
HKD	-	Side Seam
E F G H K J E	-	Front Bodice Pattern
SG	-	Straight Grain

Back bodice

A B = C D	-	Full Length + 4 cm
A C = B D	-	1/4 of Bust Circumference (19 cm) + 2 cm=21 cm
A E	-	Back Neck (10 cm)
A F	-	Neck Width (7.5 cm)
A G	-	1/2 the Shoulder Width (16 cm)
G H	-	1/6 of Bust Circumferences + 2.5 cm (14 cm + 2.5 cm)
D I	-	2.5 cm
H I	-	Side Seam
S G	-	Straight Grain
E F G H I B E	-	Back Bodice Pattern

Drafting sleeve:

A B = C D	-	Sleeve Length (20 cm)
B D = A C	-	Sleeve Width (14 cm)
A E	-	Sleeve Armhole
C E	-	7 cm
E F	-	Side Seam
B F	-	Sleeve Hem Line

Cutting lines:

Front Side	-	E F G H K J
Cross Belt	-	J K D B
Back Side	-	E F G H I B
Sleeve	-	A E F B

Layout

The fabric is folded in lengthwise centre fold.

Marking and cutting

Cut according to the pattern which is placed in the fabric after including seam allowances.

Garment components

Front Bodice - 2 Pieces

Cross Band - 4 Pieces

Back Bodice - 1 piece

Sleeve - 2 pieces

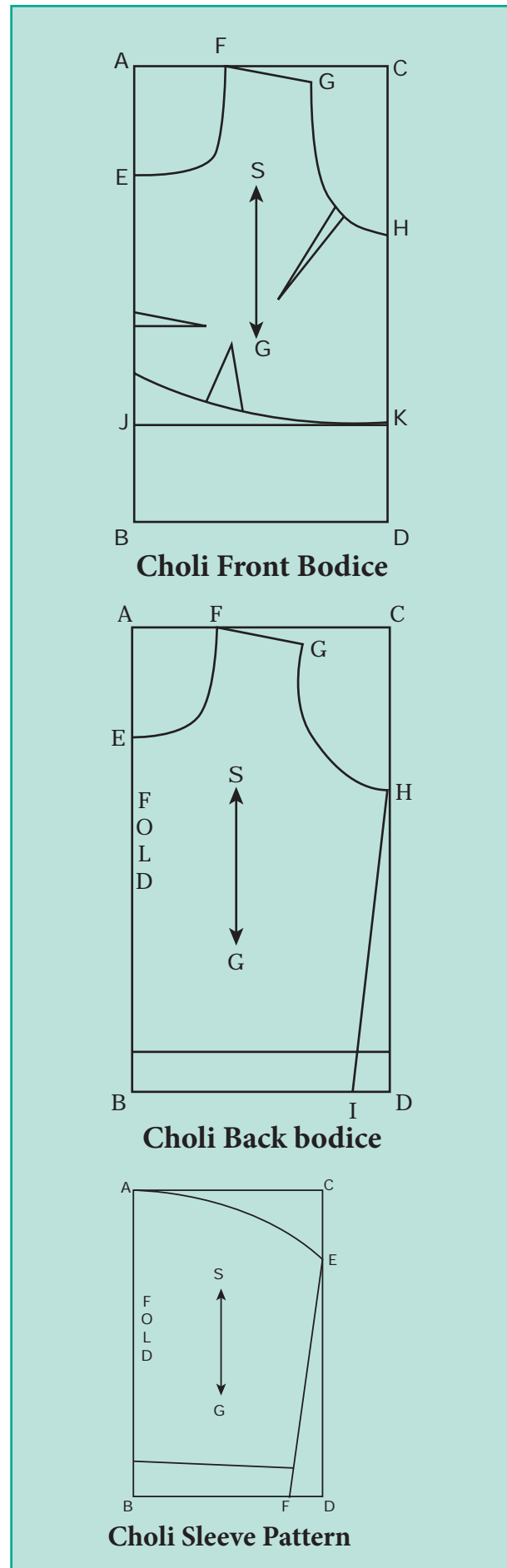
Fabric required for finishing neck and plackets.

Stitching methods

- On the front bodice make three darts and join the cross band along with it.
- On the front bodice, attach the plackets.
- On the back bodice, make two half darts.
- Finish the edges of the sleeve and join the side seams.
- Join the sleeve patterns along with the bodice patterns.
- By using the cross piece finish the edges of the necklines.

Finishing

- Cut off the unwanted threads.
- Stitch hook and eyes at the required areas.
- Finished garments should be ironed neatly.





Types of Cut Choli



Round Neck Cut Choli



Cut Choli with Fancy back bodice and sleeve



Fancy Neck Line Back Open Cut Choli



Netted Fancy Cut Choli





T-Shirt

PRACTICAL

04

LEARNING OBJECTIVES

- To increase the skills in stitching a T-Shirt.
- To know about what kind of fabric should be selected and the ways of stitching a T-Shirt.

Introduction

- T-Shirt is worn by all men irrespective of their age.
- Today T-Shirt is used by women also.
- Yoke can be attached on the back side of T-Shirts to add interests.
- Collar can be attached along with the neck line.

Tools required

Measuring Tools	- Measuring Tape, Scale.
Drawing Tools	- Brown Paper, Bell Pin, Table, Pencil.
Marking Tools	- Tailor's Chalk, Marking Wheel.
Cutting Tools	- Scissors, Seam Rippers, Shears.
Stitching Tools	- Thread, Hand Needle, Sewing Machine.
Ironing Tools	- Ironing Board, Iron Box.
Fasteners Attachments	- Buttons, Button Holes.

Suitable materials

Cotton, Polyester, Terry Cotton, Spun.

Material used for stitching

1 meter

Measurements

Age	-	5 Years
Chest Circumference	-	65 cm
Length	-	45 cm
Shoulder Width	-	26 cm
Arm Scye	-	26 cm
Sleeve Length	-	13 cm + 2 cm (Seam allowance)

Drafting procedure

Front

AB = CD	-	Rectangle
AC = BD	-	1/4 Chest Circumference (16 cm) + 3 cm (for ease)
AB = CD	-	Length (45 cm) + Hem allowance (4 cm)
$A_1 - A = B_1 - B$	-	Front Opening (3 cm)
AE	-	Front Neck Depth (5 cm)
AF	-	Neck Width (5 cm)
AG	-	1/2 Shoulder Width (13 cm)
GH	-	1/2 Upper Arm Circumference (13 cm)
HD	-	Side Seam
SG	-	Straight Grain

Back bodice

AB = CD	-	Length (45 cm) + Hem Allowance (4 cm)
AC = BD	-	1/4 Chest Circumference (16 cm) + 3 cm (for ease)
AE	-	Back Neck Width (4 cm)

AF	-	Neck Width (5 cm)
AG	-	1/2 Shoulder Width (13 cm)
GH	-	1/2 Upper Arm Circumference (13 cm)
HD	-	Side Seam
SG	-	Straight Grain

Drafting procedure for sleeve

AB = CD	-	Sleeve Length + Hem (13 cm + 3 cm)
AC = BD	-	1/2 Upper Arm Circumference (13 cm)
CE	-	5 cm
DF	-	2 cm
BF	-	Sleeve Hem
EF	-	Side Seam

Drafting procedure for collar

AB = CD	-	Collar Height (8 cm)
AC = BD	-	Collar Width (16 cm)
DF	-	1.5 cm
AE	-	1 cm

Drafting procedure for pocket

AB = CD	-	Height (12 cm)
AC = BD	-	Width (10 cm)

Cutting lines

Front Bodices	-	$A_1 E F G H D B_1$
Back Bodice	-	E F G H D B
Sleeve	-	A E F B
Collar	-	E C F B

Layout

- Cut the shirt front bodice pattern such that the selvages are in the center front as plackets.



- Cut the shirt back bodices pattern on lengthwise grain such that the center back line is on fold.
- Cut the sleeve pattern on length wise grain with enough material for hem allowances.
- Cut the collar on the cross wise grain with the center on fold.

Marking and cutting

- Place the paper patterns on the fabric and cut with enough allowances.

Garment components

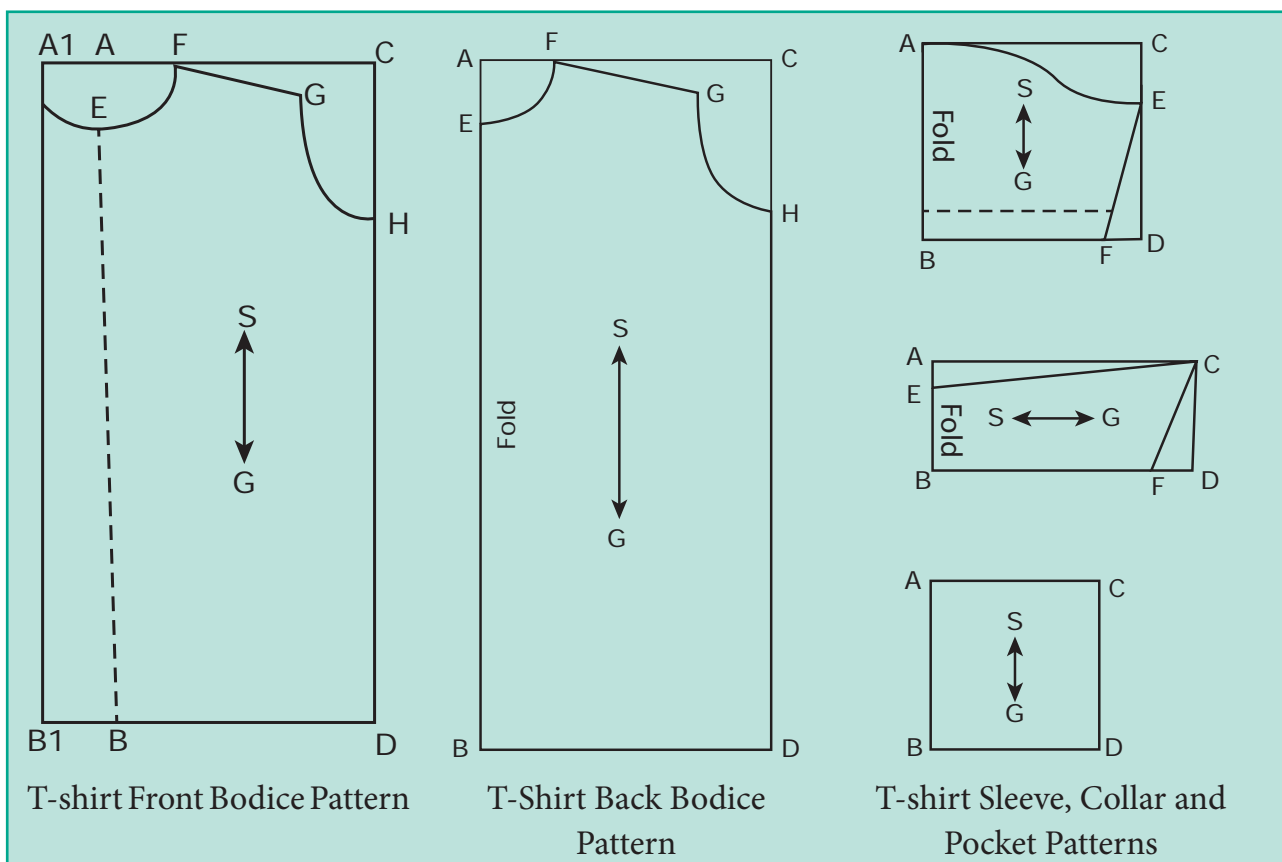
Shirt Front	-	2 Pieces
Shirt Back	-	1 Piece
Sleeve	-	2 Pieces
Collar	-	2 Pieces

Stitching Method

- Attach the front and back bodice along with the shoulder line.
- Sew the pocket on the left side of the front bodice pattern.
- Join the side seams
- Hem the sleeves and join the side seams.
- The sleeve should be attached to the bodice part in its arm hole.
- Join the two collar on all sides except the neck line.
- Turn it to the right side and make a row of stitches.
- Join the collar to the neck line.

Finishing

- Along the opening fix the button and button hole.
- Cut the unwanted hanging threads.
- Iron and fold the finished garment.





Types of T-Shirt



T-Shirt with Shirt Collar



T-Shirt with Round Collar



T-Shirt with Coloured Collar



T-Shirt with Deep Round Collar



Salwar

PRACTICAL

05

LEARNING OBJECTIVES

- To develop skills in sewing the salwar.
- To learn the different methods of constructing salwars.

Introduction

Salwar is worn by Indian women since early days. Today salwars are designed in various styles to suit the current trend and culture. Trousers, pants and pleated pants are mostly preferred for the pants. Waist bands are attached on the waist line with gatherings / elastic for the comfort of the wearers. Waist band are added both for functional and decorative purposes.

Tools required

Measuring Tools	-	Measuring Tape, Scale.
Drawing Tools	-	Brown Sheet, Bell Pin, Table, Pencil.
Marking Tools	-	Tailor's Chalk, Pencil.
Cutting Tools	-	Scissors, Seam Rippers, Fabric Shears.
Stitching Tools	-	Thread, Hand Needle, Sewing Machine.
Ironing Tools	-	Ironing Table, Iron Box.
Fasteners Attachments	-	Cords / Tapes.
Decorating Items	-	Collar Canvas.

Suitable materials

Cotton Fabric, Poplin, Fancy Materials, Floral Designed Cloths.

Measurements

Length	-	100 cm
Seat Circumference	-	90 cm
Bottom Circumference	-	45 cm

Required fabric

2 meters – 2 1/2 meter.

Drafting method

AD= BC= Full length

AB= 1/4 Seat Circumference + 15 cm

AE = 1/3 Seat + 3 cm

CF = 1/2 Bottom Circumference

AG = 5 cm

BK = 15 cm

BL = 1/4 Seat Circumference + 5 cm

Cutting lines

Waist Band - BLK

Leg Pattern - KEFC

Layout

Fabric should be folded on lengthwise centre fold for cutting.

Marking and cutting

Place the pattern on the fabric and leave sufficient fabric for seam allowance and cut.

Garment components

Band Piece - 1

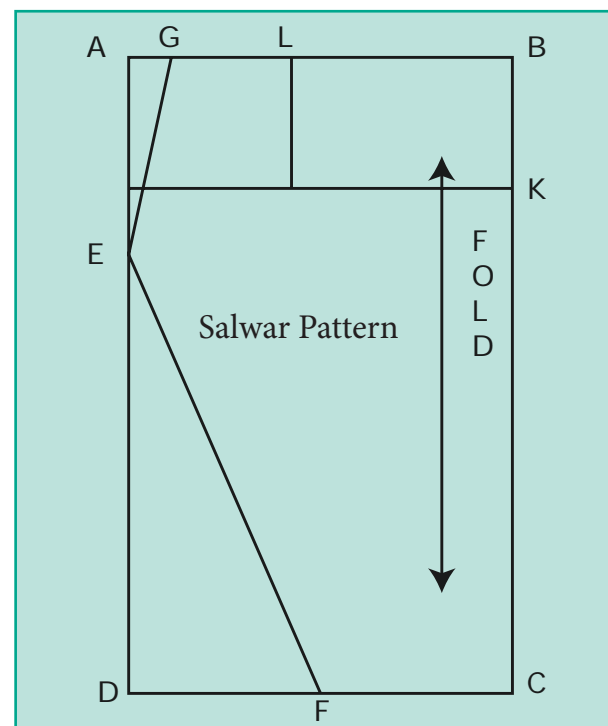
Leg Piece - 2

Stitching method

- Join the side seams of the salwar.
- Gather the bottom of the salwar at the hem line to suit the leg circumference or according to the style.
- Finish the bottom with a binding.
- In case gathers are not introduced in the style then finish the hem line of the salwar with a facing. A suitable canvas piece can be placed in between the facing for stiffness.
- Make a 2 or 3 rows of stitches for decoration at the bottom of the salwar.
- At the front part of waist line, leave a suitable hole for opening and fold and machine.
- The hole must be finished with button hole stitches.
- Insert a cord into the waist band.

Finishing

- Remove unwanted threads.
- Insert cord into the waist band, iron the stitched garment and fold neatly.





Salwar images



Salwar with Top Yoke



Salwar with Pleats



Salwar with Embroidery



Salwar in Dhoti Style





Kameez

PRACTICAL

06

LEARNING OBJECTIVES

- To improve the skill in stitching a kameez.
- To learn to select fabrics, decorations suitable for stitching a kameez.

Introduction

- Kameez is worn among Indian women since ages.
- It gives comfort to the wearer.
- It is a long and loose fitting garment.

Tools required

Measuring Tools	-	Inch Tape, Scale.
Drawing Tools	-	Brown Sheet, Bell Pin, Table, Pencil.
Marking Tools	-	Tailor's Chalk, Pencil.
Cutting Tools	-	Scissors, Seam Rippers, Fabric Shears.
Stitching Tools	-	Hand Needle, Thread, Sewing Machine.
Ironing Tools	-	Iron Table, Iron Box.
Fasteners Attachments	-	Hook and Eye, Press Button.
Decorating Materials	-	Applique, Embroidery, Lace, Sequence work.

Suitable fabrics

Muslin, Cotton, all types of silk fabrics and fancy fabrics.

Measurements

Length of Kameez	-	76 cm
Bust Circumference	-	80 cm
Upper Arm Circumference	-	35 cm
Shoulder Width	-	30 cm
Hip Circumference	-	75 cm
Sleeve Length	-	20 cm (with Hem Allowance)

Required fabric

Twice the length of kameez and sleeve length.

Drafting procedure

ABCD	-	Draw a rectangle
AB = CD	-	Length of Kameez + Hem Allowance (2 cm)
AC = BD	-	1/4 Bust Circumference + 4 cm
AC ₁	-	Front Neck Depth (8 cm)
AE	-	Neck Width (7 cm)
AG	-	1/2 Shoulder Width (15 cm)
GH	-	1/2 Upper Arm Circumference (17.5 cm)
HI	-	1/4 Bust Circumference (20 cm)
IJ	-	1 cm
DD ₁	-	10 cm
HJ L	-	Side Seam
AE	-	Back Neck Depth (6 cm)
F ₁ E G H J L D B F	-	Front and Back Patterns
SG	-	Straight Grain

Sleeve

AB = CD	-	Length of Sleeve
AC = BD	-	1/2 Upper arm Circumference
BF	-	Sleeve Hem Line
DF	-	1 cm
E – F	-	Side Seam
A – E	-	Arm Hole

Cutting lines

Kameez Front	-	C ₁ E G H J L D B
Kameez Back	-	F E G H J L D B
Sleeve	-	A E F B

Layout

Fold the fabric in lengthwise fold.

Garment components

Front Bodice	-	1
Back Bodice	-	1
Sleeve	-	2

Marking and cutting

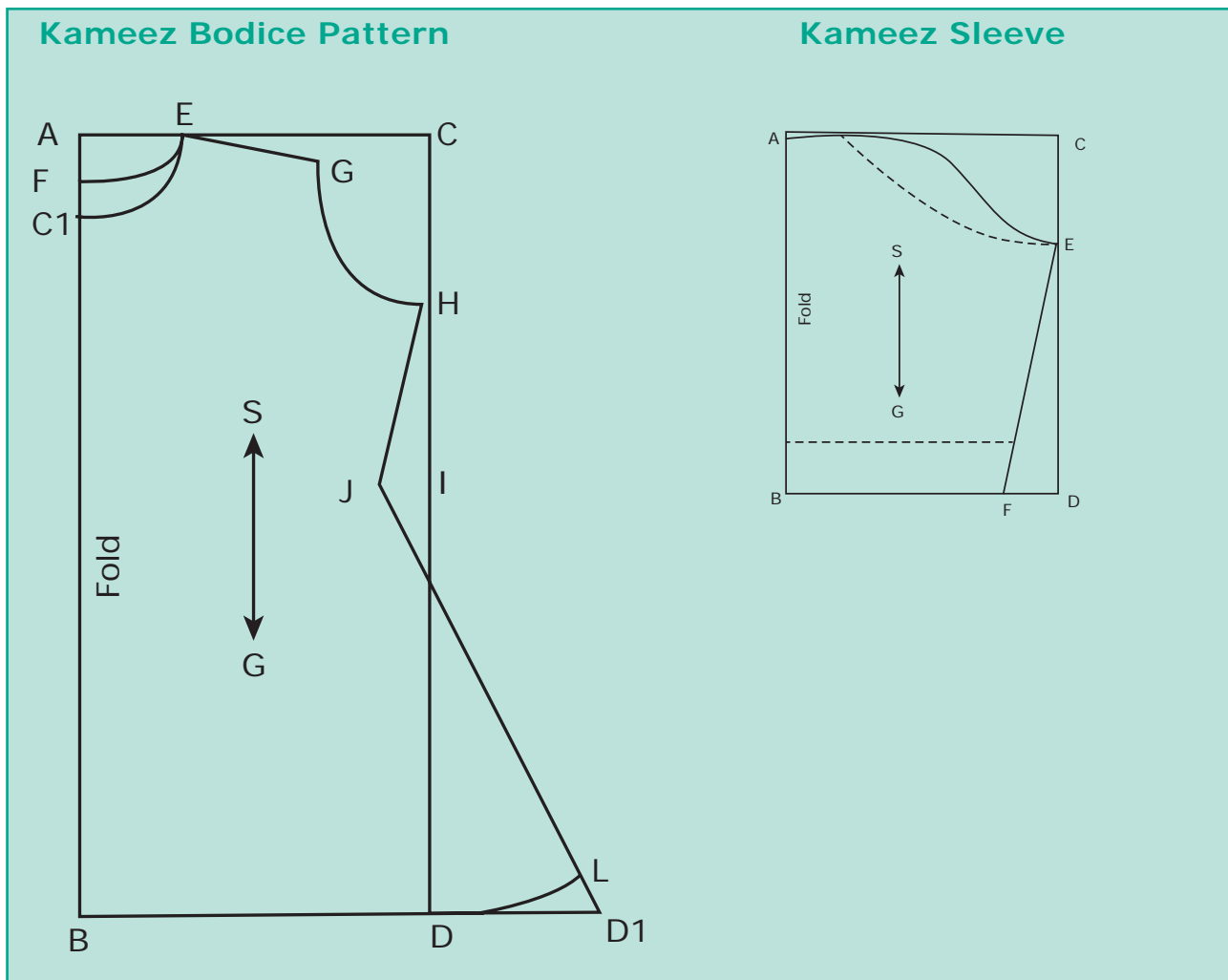
Mark the pattern on the fabric, leave the seam allowance and cut.

Stitching Method

- With the help of the pattern cut the fabric.
- Join the shoulders of front and back patterns.
- Stitch the dart that is required in both front and back part of the kameez.
- Use continuous placket and finish the opening, as per the length needed.
- Finish the sleeve hem line and join it in the arm scye part of kameez.
- Join the side seams using French seam.
- Using bias piece finish the neck with a facing.

Finishing

- Stitch hook and eye at the closures.
- Cut unnecessary threads.
- Iron the kameez and fold it neatly.





Kameez Images



Kameez with Heavy Embroidery



Kameez with Round Neck line



Kameez with V Neckline



Kameez with Patiala Style Salwar



Pyjama

PRACTICAL

07

LEARNING OBJECTIVES

- To know and gain knowledge on the construction of a pyjama.
- To understand the suitable fabric and designs for a pyjama.

Introduction

- Pyjama is adopted by all the age group of men as a lower garment.
- Pyjama serves as both casual and night wear garment.
- This is the traditional costume of Andhra Pradesh.

Tools required

Measuring Tools	-	Measuring Tape, Scale.
Drawing Tools	-	Brown Paper, Pins, Pencil, Drawing Table.
Marking Tools	-	Tailor's Chalk, Pencil.
Cutting Tools	-	Scissors, Seam Rippers, Fabric Shears.
Stitching Tools	-	Thread, Hand Needle, Sewing Machine.
Ironing Tools	-	Iron Box, Ironing Table.
Fasteners and Openers Attachments	-	Elastic, Tape.
Decorating Items	-	Embroidery, Applique Binding by using Contrast Fabric.

Suitable fabric

Cotton, Voils, Kathar.

Measurement

Age	-	5 Years
Length	-	56 cm
Waist Band	-	8 cm
Bottom Folding	-	2 cm
Seam Circumference	-	84 cm

Required Fabric

Including height + bottom folding – 1 to 1 1/2 meters.

Drafting Procedure

Draw a rectangle ABCD

AB = CD - Length (56 cm) + Bottom Seam Allowance (2 cm) + Waist Band (8 cm)

AC = BD - 1/4 Seat Circumference (21 cm)

CE - 2.5 cm

CF - 1/3 Seat Circumference (19 cm)

DG - 5 cm

FG - Inside Leg

BG - Leg Circumference

EF - Crotch Seam

SG - Straight Grain

Cutting lines

AEFGBA - Front and Back Pyjama Patterns.

Layout

Fold the fabric in lengthwise grain and cut.

Marking and cutting

Trace out the pattern on the fabric and cut the fabric after leaving enough seam allowances.

Garment components

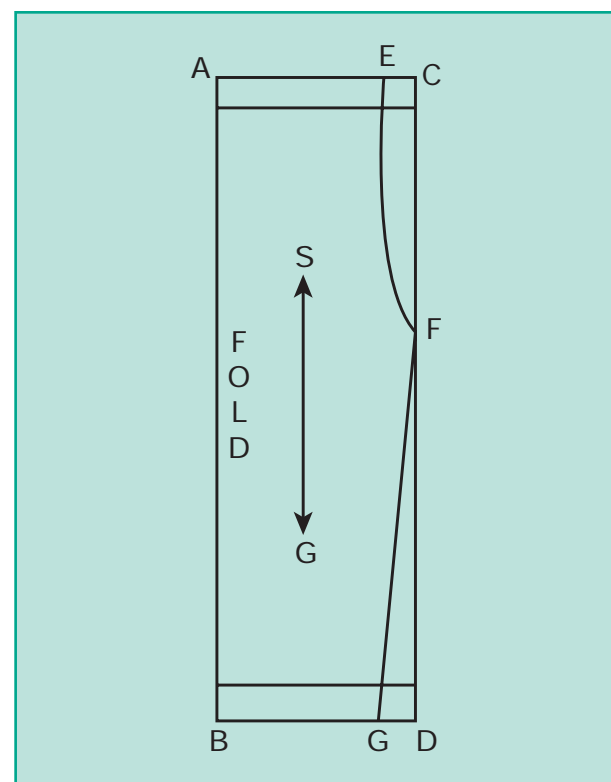
Front and Back Part - 2 pieces

Stitching procedure

- Fold the bottom of the pyjama and stitch.
- Stitch the seam of the pyjama.
- Fold and stitch the waist band of the pyjama, with suitable allowance for inserting the cord.

Finishing

- Trim out the unwanted threads.
- Insert a cord or elastic through the front opening of the pyjama and finish out the garment.
- Iron and fold the pyjama neatly.



Pyjama Bodice Pattern



Pyjama images



Night wear Pyjama

Kids wear Pyjama



Kalidhar Kurta

PRACTICAL

08

LEARNING OBJECTIVES

- To enrich the knowledge in stitching procedure of a kalidhar kurta.
- To select the suitable fabric, design and embellishments that can be added to the kalidhar kurta.

Introduction

- Kalidhar kurta was generally worn by north Indian men.
- Today the garments is also being adopted by the South Indian men as a festive and functional wear.

Tools Required

Measuring Tools	-	Measuring Tape, Scale.
Drawing Tools	-	Brown Sheets, Pins, Table, Pencil.
Marking Tools	-	Tailor's Chalk, Pencil.
Cutting Tools	-	Scissors, Seam Rippers, Shears.
Stitching Tools	-	Thread, Machine Needle, Hand Needle.
Ironing Tools	-	Iron Box, Iron Table.
Fasteners Attachments	-	Zipper, Button, Press Button.
Decorative Materials	-	Embroidery.

Suitable Fabric

Cotton, Silk, Polyester, Linen and other soft material can be used.

Measurements

Age	- 4 to 5 Years
Length	- 48 cm
Bust or Chest Circumference	- 65 cm
Sleeve Length	- 38 cm
Upper arm Circumference	- 26 cm
Shoulder Width	- 26 cm
Gusset Length / Width	- 8 cm / 8 cm
Khali (Side Piece)	- 4 cm
Upper Width	- 4 cm
Khali Lower Width	- 4 cm

Fabric requirement

Twice the length of the garment + sleeve length and extra 20 cm for finishing (1.50 mtrs.).

Drafting procedure

Construct a rectangle ABCD

AB = CD - Height + Hem allowances
(48 + 2) 50 cm

AE - Neck Width (8 cm)

AF - Back Neck Depth (4 cm)

AG - Front Neck Depth (8 cm)

AC - 1/2 of the Back Width
(Shoulder) (13 cm)

CH - 1/2 Upper Arm
Circumference (13 cm)

Side Panel or Khali pattern

$A_1 B_1 = C_1 D_1$ - Khali Height - 35 cm

$A_1 C_1$ - Upper Khali - 4 cm

$B_1 D_1$ - Lower Khali - 8 cm

Drafting procedure for sleeve

AB - Sleeve Length + 3 cm

AC - 1/2 the Upper Arm Circumference
(13 cm)

BE - 2 cm

AE - Sleeve Side Seam

ED - Sleeve Hem Line

Cutting lines

F E G E C D B - Kurta Front and Back

A B C D - Khali Piece

A B C D E - Sleeve

Layout

Fold the fabric in the length wise grain.

Marking and cutting

Using the paper pattern, mark the places to be cut on the fabric and cut the fabric by leaving enough of allowances for seams.

Garment components

Kurta Front and Back - 1 Piece

Khali Side Panel - 4 Pieces

Gusset - 2 Pieces

Sleeve - 2 Pieces

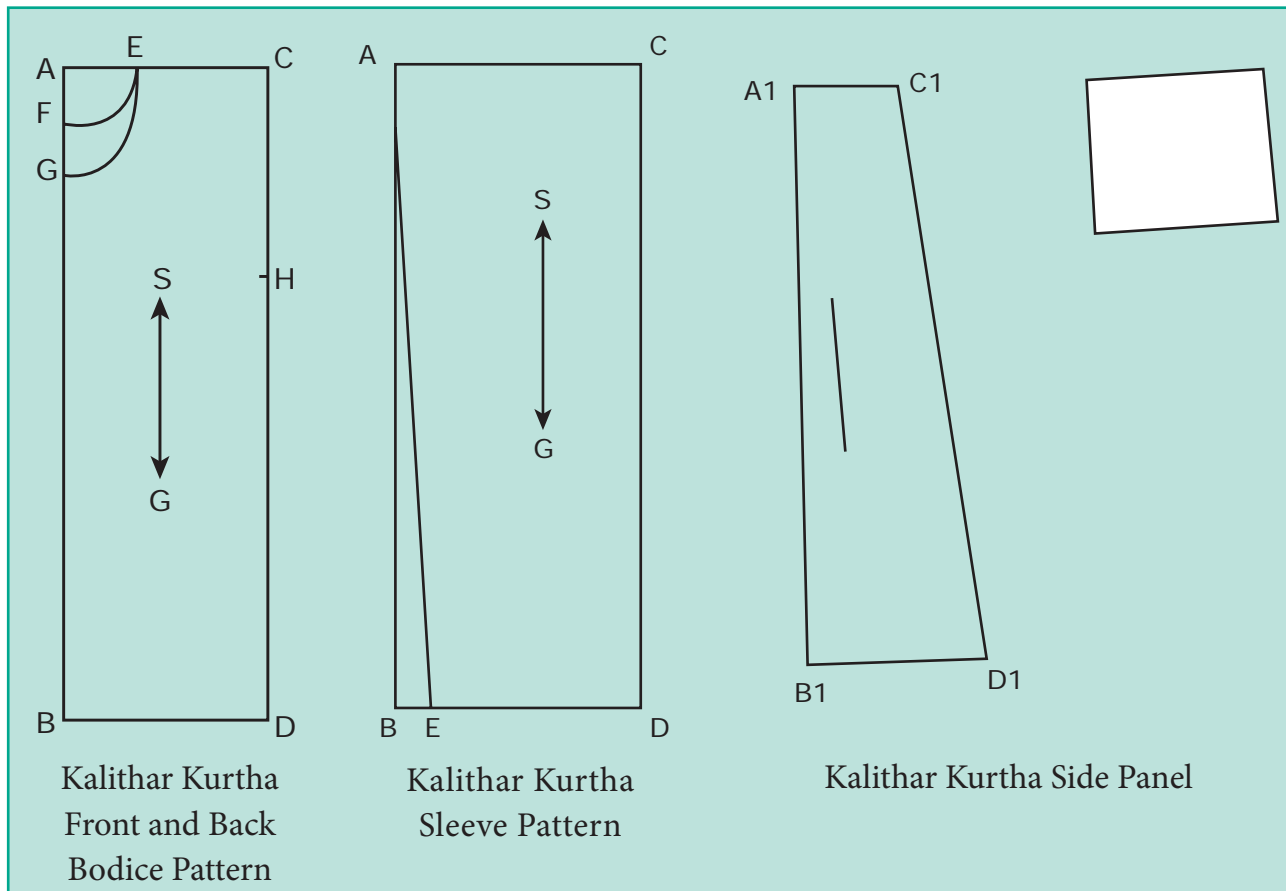
Stitching Procedure

- Attach the sleeve to the bodice.
- Join the khali piece to side seams of the bodice front, back and sleeves.
- Join the Gusset to the body and sleeve piece pattern.
- Make a mitre opening in the kurta.
- Finish the neck using bias piece.
- Stitch and finish the sleeve bottom and kurta bottom.
- Join the sides of the garment.



Finishing

- Trim out the unwanted threads.
- Finish out the openings with buttons.
- Iron and fold the finished garment.



Kalithar kurtha images



Kurtha with Side Slit



Kurtha in Anarkali Style



PROJECT

Any one of the projects can be assigned to the students.

10 marks

A period of 30 days can be given to complete the project.

1. Draft and prepare the instructions construct a Kameez, with minimum two variations.
2. Collect and prepare an album of different types of advertisements in the field of textiles and dress designing.

FIELD TRIP

15 marks

1. Visit an entrepreneur in your city, conduct a survey and collect information about the following:
 - Name of the entrepreneur
 - Address of the entrepreneur
 - Types of products produced by the entrepreneur
 - Number of persons working
 - If received bank loans, if yes give details
 - Type of assets in entrepreneur unit
 - Hurdles or problems faced by the entrepreneur
 - Government
 - Personal
 - Marketing
 - Production
 - Steps taken by the entrepreneur to become successful

Model Question Paper

Textiles and Dress Designing - Practicals

1. Gathered Frock with Puff Sleeve

- a. Write the instruction for drafting Gathered Frock with Puff Sleeve with suitable figure
- b. Draft and cut the paper pattern
- c. Stitch the Gathered Frock with Puff Sleeve
 - (i) Finish the gathers
 - (ii) Finish neckline, hemline and sleeve with piping (or) facing

2. In skirt

- a. Write the instruction for drafting In skirt with suitable figure
- b. Draft and cut the paper portion
- c. Stitch the In skirt
 - (i) Finish the side seams
 - (ii) Finish waistband, and hemlines.

3. Cut Choli

- a. Write the instruction for drafting Cut Choli with suitable figure
- b. Draft and cut the paper pattern
- c. Stitch Cut Choli
 - (i) Attach miter placket at the neck opening
 - (ii) Finish neckline, armcyce

4. T-shirt

- a. Write the instruction for drafting a T-shirt with suitable figure
- b. Draft and cut the paper pattern
- c. Stitch T-shirt
 - (i) Finish placket
 - (ii) Finish neck lines, sleeves, hem lines

5 Salwar

- a. Write the instruction for drafting a Salwar with suitable figure
- b. Draft and cut the paper pattern
- c. Stitch Salwar
 - (i) Finish side seams, gather the bottom of the Salwar.
 - (ii) Finish waist band.

6 kameez

- a. Write the instruction for drafting a Kameez with suitable figure
- b. Draft and cut the paper pattern
- c. Stitch kameez
 - (i) Finish side seams, darts,
 - (ii) Finish neck lines, continuous bound placket, sleeve, facing.

7 Pyjama

- a. Write the instruction for drafting a Pyjama with suitable figure
- b. Draft and cut the paper pattern
- c. Stitch Pyjama
 - (i) Finish side seam.
 - (ii) Finish waist band and cord

8 Kalithar Kurtha

- a Write the instruction for drafting a Kalithar Kurtha with suitable figure
- b Draft and cut the paper pattern
- c Stitch Kalithar Kurtha
 - (i) Attach sleeve, hem lines
 - (ii) Finish neck and side seams.

ALLOCATION OF PERIODS CHAPTERWISE
XII STD – VOCATIONAL SUBJECT

Subject: Textiles and Dress Designing Practical

Month	No. of Periods	No. of Periods for each lesson	Topic (Theory)
June	14	7	Hand Stitches
		7	Machine Stitches
July	21	7	1. Gathered Frock with Puff Sleeve
		7	2. In skirt
		7	3. Cut Choli
		MID TERM	
August	28	14	4. T-shirt
		14	5. Salwar
September		QUARTERLY EXAM	
October	28	14	6. Kameez
		14	7. Pyjama
November	14	14	8. Kalithar Kurtha
		PRE HALF YEARLY EXAM	
December		HALF YEARLY EXAM	
January		REVISION EXAM	

Higher Secondary Class XII
Textiles and Dress Designing - Theory & Practicals
List of Authors and Reviewers

Academic Advisor & Expert

Dr. P. Kumar,
Joint Director (Syllabus),
State Council of Educational Research and Training,
Chennai.

Domain Expert

Dr. S. Amsamani, Professor. (CAS)
Avinashilingam Institute for Home Science and
Higher Education for Women, Coimbatore.

Subject Experts

Dr. G. Bagyalakshmi

Associate Professor & Head,
Avinashilingam Institute for Home Science and
Higher Education for Women, Coimbatore.

Dr. R. Prabha

Assistant Professor (SG)
Avinashilingam Institute for Home Science and
Higher Education for Women, Coimbatore.

Dr. K. Kalaiarasi

Assistant Professor (SG),
Avinashilingam Institute for Home Science and
Higher Education for Women, Coimbatore.

Dr. U. Ratna,

Assistant Professor (SS),
Avinashilingam Institute for Home Science and
Higher Education for Women, Coimbatore.

Dr. R. Sunitha

Assistant Professor (SS),
Avinashilingam Institute for Home Science and
Higher Education for Women,
Coimbatore

P. Chandra

PG Asst, Girls Hr.Sec. School,
Perambur, Chennai

P.A. Rani

Vocational Teacher TELC,
Hr. Sec.School Usilampatti,
Madurai.

M. Rosaly

Vocational Teacher, Nirmala Girls. Hr.Sec.School,
Madurai.

S. Jeevekani

Vocational Teacher TELC,
Hr. Sec.School Usilampatti,
Madurai.

S. Anees Aysha

PG. Asst, CSI Bain Matriculation HSS,
Kilpauk, Chennai.

Academic Co-ordinator

A. Illangovan,
Assitant Professor,
(Dr. Radhakrishnan Awardee-2018)
SCERT, Chennai-06

P.Malarvizhi,

BT Assitant, (Mathematics),
SCERT, Chennai-06

Layout

Arockiam Felix
Chennai

Wrapper Design

Kathir Arumugam

In-House QC

Arun Kamaraj P

Co-ordination

Ramesh Munisamy

QR Code Management Team

R. Jaganathan, SGT,
PUMS - Ganesapuram,
Polur, Thiruvannamalai.

A. Esakkidurai, PGT,
GHSS, Sikkal, Ramanathapuram.

M. Saravanan, B.T,
G.G.H.S.S, Puthupalayam,
Vazhapadi, Salem.

This book has been printed on 80 G.S.M.
Elegant Maplitho paper.

Printed by offset at:



Notes

