

Sample Paper 9

Class X Exam 2022-23

English-Language and Literature (184)

Time Allowed : 3 Hrs.

Maximum Marks: 80

General Instructions:

1. 15-minute prior reading time allotted for Q-paper reading.
 2. The Question Paper contains THREE sections READING, GRAMMAR & WRITING and LITERATURE.
 3. Attempt question based on specific instructions for each part.
-

SECTION A- READING SKILLS 20

I. Read the passage given below. 10

1. The problem of the conservation of historical monuments (statues, columns, ancient buildings) requires an accurate study of the many environmental agents which bring about the deterioration process and affect the actual rate of deterioration. Among the most active causes of weathering, we can cite : (i) the weakening of the outer layer of the art work, which is caused by complex microphysical effects and is in particular due to wetting of the outer layer of the artwork (a comparison between the effects of rainwater and condensation is made); (ii) the chemico-physical action of pollutants captured in both the dry and wet phase.
2. The destructive processes depend on many factors : the past history of the monument, the capture and nature of the pollutants, and the frequency of some microclimatic conditions, particularly those supplying the water necessary for chemical reactions. To this end studies of diurnal and seasonal variations on the monument of both the heat wave and the fluxes of moisture and energy are very important.
3. Some of these processes have been shown with microclimatic studies and microphysical investigation associated with mineralogic and chemical analyses of samples of weathered material. Mathematical models in some cases (especially for solar radiation and temperature) permit physical simulation, reconstruction of past data and extrapolation into the future observation of many monuments from different epochs; situated at various sites, gives examples of the fundamental processes that are often associated with, or masked by, other effects.
4. The main weathering processes are due to the combined action of rainwater and atmospheric pollutants (particularly the carbonaceous particles due to combustion) deposited on the surface of the monument. The way in which the surface is wetted is

very important : in fact, a short drizzle can activate the dry deposit without washing it away, and in this case the pH of rain droplets is of secondary importance; on the other hand, showers supply abundant water which favours dissolution of the stone and removal of the solute, resulting in a thinning of the original rock. Another important factor is the dynamic regime (i.e. laminar or turbulent) of the water flowing over the surface of the monument.

5. In zones where the surface of marble or calcareous monuments is only wetted, but protected from run-off, black crusts (characterized by crystals of gypsum and calcite with carbonaceous particles embedded in the crusts) are formed. Zones subjected to heavy run-off are also subjected to a thinning of the rock and small authentic calcite crystals form that are white in appearance.
6. In the case of relatively unpolluted towns, where marble and limestone sulphation is not the main cause of the deterioration process, biological deterioration mechanisms are often very important, due to the activity of epilithic and endolithic microflora and microfauna.
7. The case of particularly precious mortars, e.g. murals or frescoes, is discussed in order to clarify the thermodynamic method proposed for the analysis of experimental campaigns. Finally actions are described that act on the causes and not only on the effects.

Based on your understanding of the passage, answer the questions given below.

- i. List any two factors on which the destructive processes of historical monuments depend.
 1. _____
 2. _____
- ii. The problem of the conservation of historical monuments requires :
 - (a) an understanding of the deterioration process.

- (b) an accurate study of the many environmental agents.
- (c) an accurate assumption of effects of rainwater.
- (d) an understanding of the effects caused by the chemico-physical action of pollutants.
- iii. The main weathering processes of the monument are caused due to the deposition of _____ on the surface of the monument.
- (a) gypsum and calcite with carbonaceous particles
- (b) the heat wave and the fluxes of moisture and energy
- (c) pollutants which weaken the art work
- (d) the combined action of rainwater and atmospheric pollutants
- iv. What favours the dissolution of the stone and removal of the solute, resulting in a thinning of the original rock?
- v. To understand the destructive process of a monument it is very important to study the :
- (a) moisture deposited on the monument yearly.
- (b) understand the variations of heat affecting the monument.
- (c) diurnal and seasonal variations on the monument.
- (d) fluxes of energy experienced by the monument.
- vi. Fill in the blank by selecting the correct option.
Zones that experience _____ are also subjected to a thinning of the rock and small authentic calcite crystals form that are white in appearance on the monument.
- (a) extreme air pollution
- (b) acid rainfall
- (c) harsh winds
- (d) heavy run-off
- vii. Which of the following will be the most appropriate title of the passage ?
- (a) Deterioration Process of Historical Monuments
- (b) Monuments and their Deteriorations
- (c) The Legacy of Monuments
- (d) The Science of Deterioration

- viii. Complete the following analogy correctly with a word/phrase from paragraph 2:
tree : sap :: hydrant : _____
(Clue : Just like a tree is a source of sap, similarly a hydrant is a source of...)

- ix. State whether the following statement is TRUE or FALSE:

When talking about weathering processes, the way in which the surface is wetted is very important.

- x. Substitute the word 'weathering' with ONE WORD similar in meaning, in the following sentence from paragraph 4:

The main **weathering** processes are due to the combined action of rainwater and atmospheric pollutants...

II. Read the passage given below.

10

- The ocean is one of the most unexplored parts of our planet, with a magnitude of undiscovered species and mysteries. It turns out from the studies conducted over the last few decades, this magnificent environment is under serious threat from human intervention, with plastics set to outnumber fish by 2050.
- Marine life, as we know it, is suffering irreparable damage from the chemical pollution of the waters and the millions of tons of mismanaged waste dumped in the oceans each year. The result is a planetary crisis with over 100 million marine animal's lives get lost every year, and the decay of the ocean's ecosystem.

Shocking Ocean Pollution Statistics:

- 100 million marine animals die each year from plastic waste alone.
- 100000 marine animal die from getting entangled in plastic yearly - this is just the creatures we find.
- 1 in 3 marine mammal species get found entangled in litter, 12-14000 tons of plastic are ingested by North Pacific fish yearly.
- In the past 10 years, we've made more plastic than the last century. By 2050, the pollution of fish will be outnumbered by our dumped plastic.
- The largest trash site on the planet is the Great Pacific Garbage Patch, twice the surface area of Texas, it outnumbers sea life there 6 to 1.
- China is ranked #1 for mismanaged waste and plastics. However, the US is in the top 20 with a more significant waste per person contributions.
- 300 Million tons of plastic gets created yearly, and this weighs the same as the entire human population, and 50% is single-use only.
- There are 5.25 trillion pieces of plastic waste estimated to be in our oceans. 269000 tons float, 4 billion microfibers per km² dwell below the surface.
- 70% of our debris sinks into the ocean's ecosystem, 15% floats and 15% lands on our beaches.
- In terms of plastic, 8.3 million tons are discarded in the sea yearly. Of which, 236000 are ingestible microplastics that marine creatures mistake for food.

- Plastics take 500-1000 years to degrade; currently 79% is sent to lands or the oceans, while only 9% is recycled, and 12% gets incinerated.
- 1950-1998 over 100 nuclear blast tests occurred in our oceans.
- 500 marine locations are now recorded as dead zones globally, currently the size of the United Kingdom's surface (245000 km²)
- 80% of global marine pollution comes from agriculture runoff, untreated sewage, discharge of nutrients and pesticides.
- 90% of the worldwide ocean debris comes from 10 rivers alone.

- Almost 1,000 species of marine animals get impacted by ocean pollution, and we now have over 500 locations recorded as dead zones where marine life cannot exist. How did this happen, what is causing the most damage, find out everything above in the marine pollution statistics round-up.
- The Great Pacific Garbage Patch is a floating island of debris, accumulated in the North Pacific Ocean by an extensive system of currents called gyres. It is built up from two other waste patches, the western garbage patch near Japan and the eastern garbage patch near America's west coast near California and Hawaii.
- The North Pacific Subtropical Convergence Zone links the east and western garbage patches, acting as a highway for waste to move from one to the other. Because of this, a small item of debris dropped near California can travel across to Japan, then eventually get sucked up by these swirling garbage patch vortices.
- The great Pacific garbage patch size is quite shocking. These patches of trash are said to be twice the size of Texas and float on the surface but do drop several meters into the ocean in places, which makes the correct size challenging to measure. The world's largest garbage site is mainly made up of microplastics creating a vast cloud, with newer items of debris that haven't broken down as much floating around like chunks in a soup. The great Pacific garbage patch effects on marine life are extremely significant.

Based on your understanding of the passage, answer the questions given below.

- Infer one reason for the following, based on information in paragraph 5:
A small item of debris dropped near California can travel across to Japan.
- According to the passage, what is set to outnumber the fish in the ocean by the year 2050?
(a) pollution

- garbage
- plastics
- human waste

- The largest trash site on the planet, the Great Pacific Garbage Patch, is twice the size of which city?
(a) Arizona
(b) Florida
(c) Colorado
(d) Texas
- Which country is ranked number one for mismanaged waste and plastics?
- Which of the following is not a place from where 80% of global marine pollution comes?
(a) agriculture run-off
(b) untreated sewage
(c) discharge of nutrients and pesticide
(d) factory waste disposal
- State whether the following statement is TRUE or FALSE:
700 marine locations are now recorded as dead zones globally.
- Fill in the blank by selecting the correct option:
An extensive system of currents in the North Pacific Ocean is called _____.
(a) debris
(b) vortex
(c) convergence
(d) gyres
- Substitute the word 'irreparable' with ONE WORD similar in meaning, in the following sentence from paragraph 2:
Marine life, as we know it, is suffering irreparable damage from the chemical pollution of the waters...
- Choose an option that is an antonym of the word 'unexplored'?
(a) known
(b) undiscovered
(c) irrelevant
(d) unimportant
- Based on your understanding of the text, list 2 reasons for the following:
Marine life is suffering from irreparable damage.
1. _____
2. _____

III. SECTION B- GRAMMAR 10

Attempt **ANY TEN** of the following questions. 10

- i. Fill in the blank by choosing the correct option to complete the sentence.

The bridge is being _____ at the moment so it can't be used.

- (a) repaired
- (b) repairing
- (c) repair
- (d) repairs

- ii. Read the conversation between Raman and Anitha. Complete the sentence by reporting Anitha's reply correctly.

Raman : What's the matter, Anitha?

Anitha : Oh, nothing. You cannot help me. I only want that blue umbrella.

Raman asked Anitha what the matter was. She replied that it was nothing and he could not help her as _____

- iii. Select the correct option to fill in the blank for the given line.

_____ I suggest a slight change in your plan ?

- (a) May
- (b) Would
- (c) Must
- (d) Will

- iv. Select the option that identifies the error and supplies the correction for the following line:

The people of India show remarkable unity at the time of Kargil Conflict.

| Option No. | Error | Correction |
|------------|----------|------------|
| (a) | time | times |
| (b) | conflict | conflicts |
| (c) | show | showed |
| (d) | The | A |

- v. Complete the given sentence, by filling in the blank with the correct option :

When I was a child, I _____ to school everyday instead of going by cycle.

- (a) walked
- (b) have been walking
- (c) had walked
- (d) have walked

- vi. Fill in the blank by using the correct form of the word in the bracket.

Many a student _____ (try) hard to pass his entrance exam.

- vii. Report the dialogue between Gardener and Dev, by completing the sentence :

Gardener: Did you water the plant today?

Dev: No, but I will, today.

Gardener: Then tomorrow I will get a sapling of sunflower.

The Gardener asked Dev if he had watered the plant that day. Dev replied negatively but said he would that day. Then the gardener said that _____

- viii. Identify the error in the given sentence and supply the correction.

Diwali, well known as the festival of lights, is a festival that is celebrate in almost all parts of India.

Use the given format for your response.

| Error | Correction |
|-------|------------|
| | |

- ix. Transform the following direct speech into reported speech:

The beggar said to the old man, "Can you tell me the way to the nearest temple?"

- x. Fill in the blank by choosing the correct option.

You have a large number of shirts. You _____ buy any more.

- (a) need not
- (b) can not
- (c) would not
- (d) should not

- xi. Rohit and Rajat are discussing their plans for the weekend. Complete the dialogue below by choosing the correct option.

Rohit : How do you like the idea of going to the zoo?

Rajat : That sounds good, But I _____ my parent's permission.

- (a) needs to take
- (b) need not to take
- (c) needs not to take
- (d) need to take

- xii. Identify the error in the given sentence and supply the correction.

At the age of seventeen, Galileo know that he had

discovered an important law- a law of a pendulum.

Use the given format for your response.

| Error | Correction |
|-------|------------|
| | |

IV. SECTION B- CREATIVE WRITING SKILLS 10

All the names and addresses used in the questions are fictitious. Resemblance, if any, is purely coincidental.

1. Attempt ANY ONE from A and B given below. 5

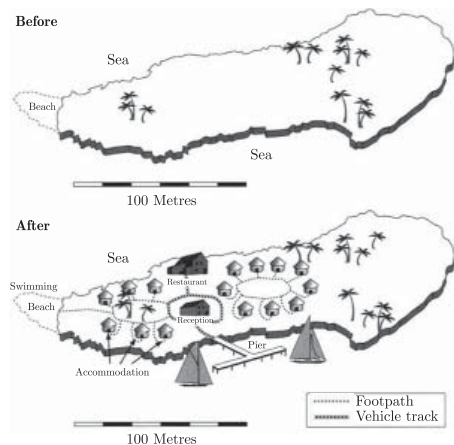
A. Write a letter to the editor of a newspaper highlighting the problem of traffic jam near Chinpumi Temple Crossing and suggesting some remedy for it.

Or

B. You are Neelam/Rakesh, Store Incharge Diksha Stores, 32/54, Rajeev Nagar, Delhi. Your school requires school bags and accessories in bulk for the commencement of the new session. Write a letter of inquiry to the Sales Manager, Sky Bags Industries Ltd. 15/3, Ravi Nagar, Delhi enquiring about the details of goods manufactured.

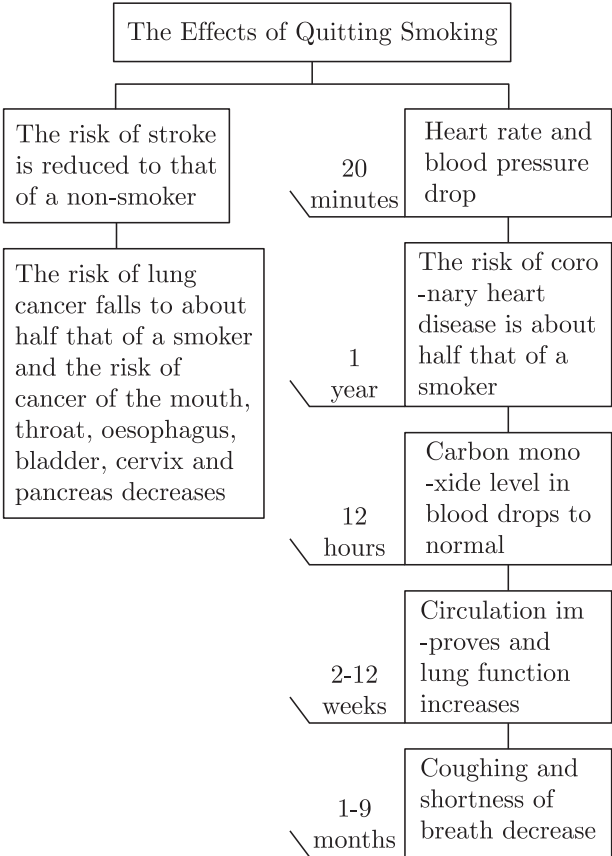
2. Attempt ANY ONE from A and B given below. 5

A. The two maps below show an island, before and after the construction of some tourist facilities. Write an analytical paragraph in 100-120 words by selecting and reporting the main features, and making comparisons where relevant.



Or

B. Study the concept chart from a recent study by WHO that has described some positive effects of quitting smoking.



Write an analytical paragraph in 100-120 words, analysing the given information.

SECTION C- LITERATURE 40

V. Reference to the Context 10

1. Attempt ANY ONE of two extracts given. 5

1.A “Paper has more patience than people’ I thought of this saying on one of those days when I was feeling a little depressed and was sitting at home with my chin in my hands, bored and listless, wondering whether to stay in or go out. I finally stayed where I was, brooding: Yes, paper does have more patience, and since I’m not planning to let anyone else read this stiff-backed notebook grandly referred to as a ‘diary’, unless I should ever find a real friend, it probably won’t make a bit of difference.”

(From the Diary of Anne Frank)

i. 'Paper has more patience than people.' What does this imply?

ii. Pick out the emoticon which clearly brings out the meaning of 'listless' as used in the extract?



(i)



(ii)



(iii)



(iv)

- (a) Option (i)
- (b) Option (ii)
- (c) Option (iii)
- (d) Option (iv)

iii. Infer one reason for the following, based on information in extract:

Anne doesn't plan to let anyone else read her diary.

iv. If the diary were a 'real friend', what qualities would Anne expect it to have?

Pick the option that lists these correctly.

- 1. optimistic
- 2. good listener
- 3. confidant
- 4. energetic
- 5. non-judgemental
- 6. outgoing
- 7. ambitious

- (a) 1 and 4
- (b) 5, 6 and 7
- (c) 2, 3 and 5
- (d) 3 and 7

v. Pick out the sentence that brings out the meaning of 'brooding' as used in the extract?

- (a) The mysterious house on the hill is still brooding above the village.
- (b) The people at the stock market always keep brooding about the gains.
- (c) He was brooding over the matter and took a long time to decide.
- (d) Suspense and drama were brooding at the site of the investigation.

Or

1.B I think he knew I made a little money this way but he did not seem to mind. Anil made money by fits and starts. He would borrow one week, lend the next. He kept worrying about his next cheque, but as soon as it arrived, he would go out and celebrate. It seems he

wrote for magazines - a queer way to make a living!

(The Thief's Story)

i. Complete the following with a phrase from extract:

| Opinion | Reason |
|---------|-------------------------------------|
| ----- | Anil received money intermittently. |

ii. The information in the extract suggests that Anil could be a

- (a) salaried professional
- (b) freelancer
- (c) business man
- (d) volunteer

iii. Complete the following analogy correctly with a word/phrase from extract:

lose : find :: lend : -----

(Clue : Just like lose is antonym of find, similarly lend is antonym of...)

iv. The reference to making a little money 'this way' refers to a way that is viewed by most people as

- (a) sensible
- (b) inappropriate
- (c) charitable
- (d) Aggressive

v. Based on your understanding of Anil in the extract, choose the option that synchronises with his thinking.

- (a) So what if I don't have much money? Giving it to that person is important as they could do with a helping hand.
- (b) I better learn how to protect my money. I think I'm being looted.
- (c) I earn money with such tremendous effort. Where does it all go?
- (d) When I become rich, I can begin to help friends then. Right now, I will spend only on myself.

2. Attempt **ANY ONE** of two extracts given.

5

2.A Some say the world will end in fire
Some say in ice.
From what I've tasted of desire
I hold with those who favour fire.

(Fire and Ice)

i. Which literary device has been used in 'I hold with those who favour fire'?

- (a) Simile

- (b) Assonance
 - (c) Alliteration
 - (d) Enjambment
- ii. How many predictions does the poet make for the ending of the world?
- iii. What does 'Fire' symbolise according to the poet?
- (a) Desire
 - (b) Avarice
 - (c) Greed
 - (d) All of these
- iv. State whether the following statement is TRUE or FALSE:
People think that the world is a beautiful place to live in.
- v. What is the poet's opinion about the world?
- (a) The poet feels that a man should fulfil all his desires.
 - (b) He think that we should control our growing desires.
 - (c) He feels that we should live life to the full.
 - (d) He says that one should live the life of an ascetic.

Or

- 2.B** Belinda tickled him, she ticked him unmerciful,
Ink, Blink and Mustard, they rudely called him Percival,
They all sat laughing in the little red wagon
At the realio, trulio, cowardly dragon.
(The Tale of Custard the Dragon)
- i. Who was tickled by Belinda?
- ii. Why did she tickle 'him'?
- (a) To make him happy
 - (b) To bite him
 - (c) To make fun of him
 - (d) To mistreat him
- iii. Who are Ink, Blink and Mustard?
- (a) Belinda's friend
 - (b) Belinda's pet
 - (c) Belinda's neighbour
 - (d) None of these
- iv. Why did they all laugh at 'him'?
- (a) He was a coward
 - (b) He was childish
 - (c) He was too ugly

(d) He wore make up

- v. Fill in the blank with ONE WORD only.
All other pets were _____ to the dragon.

VI Answer ANY FOUR of the following in about 40-50 words each. $4 \times 3 = 12$

- i. What was the effect of hailstones on Lencho's crop ?
(A Letter to God)
- ii. Young seagull tried to fly but he could not. Why was he afraid to fly ?
(Two Stories About Flying)
- iii. Why should the tiger snarl around houses at the edge of the forest ?
(A Tiger in the Zoo)
- iv. What makes Chubukov misunderstand the purpose of Lomov's visit?
(The Proposal)
- v. "Money is external". What does the poet mean by this expression taken from 'The Ball Poem'?

VII Answer ANY TWO of the following in about 40-50 words each. $2 \times 3 = 6$

- i. How did Ausable befool Max about the balcony?
(The Midnight Visitor)
- ii. Griffin's brilliance as a man of science fades before his darker traits. Comment.
(Footprints Without Feet)
- iii. What does Noodle tell Think-Tank about the books?
(The Book that Saved the Earth)

VIII Answer ANY ONE of the following in about 100-120 words. 6

- i. Gotami comes to Buddha praying to him to revive her dead son. Buddha asks her to bring a handful of mustard seeds from a house where no one has lost a child, husband, parent or friend. Through this simple act, Buddha communicates the most profound truth of life, not only to Gotami but also to the whole mankind. What is the truth that Buddha communicates? What lesson does Gotami learn? What changes would take place in a common man's life if that truth is understood?
(The Sermon at Benares)

Or

- ii. “Difficulties do come in our lives, but they are not there to stay forever.” Comment on this statement with reference to the poem ‘Fog’ by Carl Sandburg.

IX Answer ANY ONE of the following in about 100-120 words. 6

- i. Albert Einstein said, ‘The important thing is to never stop questioning.’ Richard was a genius who proved this quote true. Justify.

(The Making of a Scientist)

Or

- ii. Give a brief character sketch of Mrs. Pumphrey. What values are reflected through her character ?

(A Triumph of Surgery)

□□□□□□

Sample Paper 9 (Solved)

Class X Exam 2022-23

English-Language and Literature (184)

Time Allowed : 3 Hrs.

Maximum Marks: 80

General Instructions:

1. 15-minute prior reading time allotted for Q-paper reading.
 2. The Question Paper contains THREE sections READING, GRAMMAR & WRITING and LITERATURE.
 3. Attempt question based on specific instructions for each part.
-

SECTION A- READING SKILLS 20

I. Read the passage given below. 10

1. The problem of the conservation of historical monuments (statues, columns, ancient buildings) requires an accurate study of the many environmental agents which bring about the deterioration process and affect the actual rate of deterioration. Among the most active causes of weathering, we can cite : (i) the weakening of the outer layer of the art work, which is caused by complex microphysical effects and is in particular due to wetting of the outer layer of the artwork (a comparison between the effects of rainwater and condensation is made); (ii) the chemico-physical action of pollutants captured in both the dry and wet phase.
2. The destructive processes depend on many factors : the past history of the monument, the capture and nature of the pollutants, and the frequency of some microclimatic conditions, particularly those supplying the water necessary for chemical reactions. To this end studies of diurnal and seasonal variations on the monument of both the heat wave and the fluxes of moisture and energy are very important.
3. Some of these processes have been shown with microclimatic studies and microphysical investigation associated with mineralogic and chemical analyses of samples of weathered material. Mathematical models in some cases (especially for solar radiation and temperature) permit physical simulation, reconstruction of past data and extrapolation into the future observation of many monuments from different epochs; situated at various sites, gives examples of the fundamental processes that are often associated with, or masked by, other effects.
4. The main weathering processes are due to the combined action of rainwater and atmospheric pollutants (particularly the carbonaceous particles due to combustion) deposited on the surface of the monument. The way in which the surface is wetted is

very important : in fact, a short drizzle can activate the dry deposit without washing it away, and in this case the pH of rain droplets is of secondary importance; on the other hand, showers supply abundant water which favours dissolution of the stone and removal of the solute, resulting in a thinning of the original rock. Another important factor is the dynamic regime (i.e. laminar or turbulent) of the water flowing over the surface of the monument.

5. In zones where the surface of marble or calcareous monuments is only wetted, but protected from run-off, black crusts (characterized by crystals of gypsum and calcite with carbonaceous particles embedded in the crusts) are formed. Zones subjected to heavy run-off are also subjected to a thinning of the rock and small authentic calcite crystals form that are white in appearance.
6. In the case of relatively unpolluted towns, where marble and limestone sulphation is not the main cause of the deterioration process, biological deterioration mechanisms are often very important, due to the activity of epilithic and endolithic microflora and microfauna.
7. The case of particularly precious mortars, e.g. murals or frescoes, is discussed in order to clarify the thermodynamic method proposed for the analysis of experimental campaigns. Finally actions are described that act on the causes and not only on the effects.

Based on your understanding of the passage, answer the questions given below.

- i. List any two factors on which the destructive processes of historical monuments depend.

1. _____
2. _____

Ans :

1. The capture and nature of the pollutants.
2. The frequency of some microclimatic conditions.

- ii. The problem of the conservation of historical monuments requires :
- (a) an understanding of the deterioration process.
 - (b) an accurate study of the many environmental agents.
 - (c) an accurate assumption of effects of rainwater.
 - (d) an understanding of the effects caused by the chemico-physical action of pollutants.

Ans : (b) an accurate study of the many environmental agents.

- iii. The main weathering processes of the monument are caused due to the deposition of _____ on the surface of the monument.
- (a) gypsum and calcite with carbonaceous particles
 - (b) the heat wave and the fluxes of moisture and energy
 - (c) pollutants which weaken the art work
 - (d) the combined action of rainwater and atmospheric pollutants

Ans : (d) the combined action of rainwater and atmospheric pollutants

- iv. What favours the dissolution of the stone and removal of the solute, resulting in a thinning of the original rock?

Ans : Showers which supply abundant water.

- v. To understand the destructive process of a monument it is very important to study the :
- (a) moisture deposited on the monument yearly.
 - (b) understand the variations of heat affecting the monument.
 - (c) diurnal and seasonal variations on the monument.
 - (d) fluxes of energy experienced by the monument.

Ans : (c) diurnal and seasonal variations on the monument.

- vi. Fill in the blank by selecting the correct option.
Zones that experience _____ are also subjected to a thinning of the rock and small authentic calcite crystals form that are white in appearance on the monument.
- (a) extreme air pollution
 - (b) acid rainfall
 - (c) harsh winds
 - (d) heavy run-off

Ans : (d) heavy run-off

- vii. Which of the following will be the most appropriate title of the passage ?

- (a) Deterioration Process of Historical Monuments
- (b) Monuments and their Deteriorations
- (c) The Legacy of Monuments
- (d) The Science of Deterioration

Ans : (a) Deterioration Process of Historical Monuments

- viii. Complete the following analogy correctly with a word/phrase from paragraph 2:

tree : sap :: hydrant : _____

(Clue : Just like a tree is a source of sap, similarly a hydrant is a source of...)

Ans : water

- ix. State whether the following statement is TRUE or FALSE:

When talking about weathering processes, the way in which the surface is wetted is very important.

Ans : TRUE

- x. Substitute the word 'weathering' with ONE WORD similar in meaning, in the following sentence from paragraph 4:

The main weathering processes are due to the combined action of rainwater and atmospheric pollutants...

Ans : worn-out

II. Read the passage given below.

10

1. The ocean is one of the most unexplored parts of our planet, with a magnitude of undiscovered species and mysteries. It turns out from the studies conducted over the last few decades, this magnificent environment is under serious threat from human intervention, with plastics set to outnumber fish by 2050.
2. Marine life, as we know it, is suffering irreparable damage from the chemical pollution of the waters and the millions of tons of mismanaged waste dumped in the oceans each year. The result is a planetary crisis with over 100 million marine animal's lives get lost every year, and the decay of the ocean's ecosystem.

Shocking Ocean Pollution Statistics:

- 100 million marine animals die each year from plastic waste alone.
- 100,000 marine animals die from getting entangled in plastic yearly - this is just the creatures we find.
- 1 in 3 marine mammal species get found entangled in litter, 12-14,000 tons of plastic are ingested by North Pacific fish yearly.
- In the past 10 years, we've made more plastic than the last century. By 2050, the pollution of fish will be outnumbered by our dumped plastic.
- The largest trash site on the planet is the Great Pacific Garbage Patch, twice the surface area of Texas, it outnumbers sea life there 6 to 1.
- China is ranked #1 for mismanaged waste and plastics. However, the US is in the top 20 with a more significant waste per person contribution.
- 300 Million tons of plastic gets created yearly, and this weighs the same as the entire human population, and 50% is single-use only.
- There are 5.25 trillion pieces of plastic waste estimated to be in our oceans. 269,000 tons float, 4 billion microfibers per km² dwell below the surface.
- 70% of our debris sinks into the ocean's ecosystem, 15% floats and 15% lands on our beaches.
- In terms of plastic, 8.3 million tons are discarded in the sea yearly. Of which, 236,000 are ingestible microplastics that marine creatures mistake for food.
- Plastics take 500-1,000 years to degrade; currently 79% is sent to land or the oceans, while only 9% is recycled, and 12% gets incinerated.
- 1950-1998 over 100 nuclear blast tests occurred in our oceans.
- 500 marine locations are now recorded as dead zones globally, currently the size of the United Kingdom's surface (245,000 km²)
- 80% of global marine pollution comes from agriculture runoff, untreated sewage, discharge of nutrients and pesticides.
- 90% of the worldwide ocean debris comes from 10 rivers alone.

3. Almost 1,000 species of marine animals get impacted by ocean pollution, and we now have over 500 locations recorded as dead zones where marine life cannot exist. How did this happen, what is causing the most damage, find out everything above in the marine pollution statistics round-up.
4. The Great Pacific Garbage Patch is a floating island of debris, accumulated in the North Pacific Ocean by an extensive system of currents called gyres. It is built up from two other waste patches, the western garbage patch near Japan and the eastern garbage patch near America's west coast near California and Hawaii.

5. The North Pacific Subtropical Convergence Zone links the east and western garbage patches, acting as a highway for waste to move from one to the other. Because of this, a small item of debris dropped near California can travel across to Japan, then eventually get sucked up by these swirling garbage patch vortices.
6. The great Pacific garbage patch size is quite shocking. These patches of trash are said to be twice the size of Texas and float on the surface but do drop several meters into the ocean in places, which makes the correct size challenging to measure. The world's largest garbage site is mainly made up of microplastics creating a vast cloud, with newer items of debris that haven't broken down as much floating around like chunks in a soup. The great Pacific garbage patch effects on marine life are extremely significant.

Based on your understanding of the passage, answer the questions given below.

- i. Infer one reason for the following, based on information in paragraph 5:
A small item of debris dropped near California can travel across to Japan.

Ans : The North Pacific Subtropical Convergence Zone.

- ii. According to the passage, what is set to outnumber the fish in the ocean by the year 2050?

- (a) pollution
- (b) garbage
- (c) plastics
- (d) human waste

Ans : (c) plastics

- iii. The largest trash site on the planet, the Great Pacific Garbage Patch, is twice the size of which city?

- (a) Arizona
- (b) Florida
- (c) Colorado
- (d) Texas

Ans : (d) Texas

- iv. Which country is ranked number one for mismanaged waste and plastics?

Ans : China

- v. Which of the following is not a place from where 80% of global marine pollution comes?
- agriculture run-off
 - untreated sewage
 - discharge of nutrients and pesticide
 - factory waste disposal
- Ans :** (d) factory waste disposal

- vi. State whether the following statement is TRUE or FALSE:
700 marine locations are now recorded as dead zones globally.
- Ans :** FALSE

- vii. Fill in the blank by selecting the correct option:
An extensive system of currents in the North Pacific Ocean is called _____.
- debris
 - vortex
 - convergence
 - gyres
- Ans :** (d) gyres

- viii. Substitute the word 'irreparable' with ONE WORD similar in meaning, in the following sentence from paragraph 2:
Marine life, as we know it, is suffering irreparable damage from the chemical pollution of the waters...
- Ans :** unrecoverable

- ix. Choose an option that is an antonym of the word 'unexplored'?
- known
 - undiscovered
 - irrelevant
 - unimportant
- Ans :** (a) known

- x. Based on your understanding of the text, list 2 reasons for the following:
Marine life is suffering from irreparable damage.
- _____
 - _____
- Ans :**
- The chemical pollution of the waters.
 - The millions of tons of mismanaged waste dumped in the oceans each year.

III. SECTION B- GRAMMAR 10

Attempt ANY TEN of the following questions. 10

- i. Fill in the blank by choosing the correct option to complete the sentence.
The bridge is being _____ at the moment so it can't be used.
- repaired
 - repairing
 - repair
 - repairs
- Ans :** (a) repaired

- ii. Read the conversation between Raman and Anitha. Complete the sentence by reporting Anitha's reply correctly.
Raman : What's the matter, Anitha?
Anitha : Oh, nothing. You cannot help me. I only want that blue umbrella.
- Raman asked Anitha what the matter was. She replied that it was nothing and he could not help her as _____.
- Ans :** she only wanted that blue umbrella.

- iii. Select the correct option to fill in the blank for the given line.
_____ I suggest a slight change in your plan ?
- May
 - Would
 - Must
 - Will
- Ans :** (a) May

- iv. Select the option that identifies the error and supplies the correction for the following line:
The people of India show remarkable unity at the time of Kargil Conflict.

| Option No. | Error | Correction |
|------------|----------|------------|
| (a) | time | times |
| (b) | conflict | conflicts |
| (c) | show | showed |
| (d) | The | A |

Ans : (c)

- v. Complete the given sentence, by filling in the blank with the correct option :
When I was a child, I _____ to school everyday

instead of going by cycle.

- (a) walked
- (b) have been walking
- (c) had walked
- (d) have walked

Ans : (a) walked

- vi.** Fill in the blank by using the correct form of the word in the bracket.

Many a student _____ (try) hard to pass his entrance exam.

Ans : tries

- vii.** Report the dialogue between Gardener and Dev, by completing the sentence :

Gardener: Did you water the plant today?

Dev: No, but I will, today.

Gardener: Then tomorrow I will get a sapling of sunflower.

The Gardener asked Dev if he had watered the plant that day. Dev replied negatively but said he would that day. Then the gardener said that _____

Ans : he would get a sapling of a sunflower the next day.

- viii.** Identify the error in the given sentence and supply the correction.

Diwali, well known as the festival of lights, is a festival that is celebrate in almost all parts of India.

Use the given format for your response.

| Error | Correction |
|-------|------------|
| | |

Ans :

| Error | Correction |
|-----------|------------|
| celebrate | celebrated |

- ix.** Transform the following direct speech into reported speech:

The beggar said to the old man, "Can you tell me the way to the nearest temple?"

Ans : The beggar asked the old man if he could tell him the way to the nearest temple.

- x.** Fill in the blank by choosing the correct option.

You have a large number of shirts. You _____ buy any more.

- (a) need not
- (b) can not
- (c) would not
- (d) should not

Ans : (a) need not

- xi.** Rohit and Rajat are discussing their plans for the weekend. Complete the dialogue below by choosing the correct option.

Rohit : How do you like the idea of going to the zoo?

Rajat : That sounds good, But I _____ my parent's permission.

- (a) needs to take
- (b) need not to take
- (c) needs not to take
- (d) need to take

Ans : (d) need to take

- xii.** Identify the error in the given sentence and supply the correction.

At the age of seventeen, Galileo know that he had discovered an important law- a law of a pendulum.

Use the given format for your response.

| Error | Correction |
|-------|------------|
| | |

Ans :

| Error | Correction |
|-------|------------|
| a | the |

IV. SECTION B- CREATIVE WRITING SKILLS 10

All the names and addresses used in the questions are fictitious. Resemblance, if any, is purely coincidental.

- 1. Attempt ANY ONE from A and B given below. 5**

- A.** Write a letter to the editor of a newspaper highlighting the problem of traffic jam near Chinpumi Temple Crossing and suggesting some remedy for it.

Ans :

232, Friends Colony
Noida
16th May, 20xx
To,
The Editor

The Hindustan Times
New Delhi

Subject: Chaotic traffic condition near Chintpurni Temple Crossing

Respected Sir,

Through this letter of mine, I wish to draw the attention of the authorities towards the problems faced by students everyday. We reach our college fifteen minutes late as our college bus gets stuck in a traffic jam near Chintpurni Temple crossing. People park their vehicles in a haphazard way. Beggars crowd the gates as well as roads, waiting for someone to come out of the temple and give alms to them. There is a traffic signal at that crossing but people do not follow it.

It is my humble request that a parking area should be allotted to the Temple site so that people can park their vehicles in a proper way. The Temple Trust should appoint someone who can make the beggars sit in a queue and that too on the footpath and not on the road. And last but not the least, a police-picket should be there at the crossing to make people follow the rules and regulations.

I hope you'll publish this letter in your esteemed newspaper so that some actions can be taken in this matter.

Thanking you
Yours sincerely
Akriti

Or

- B. You are Neelam/Rakesh, Store Incharge Diksha Stores, 32/54, Rajeev Nagar, Delhi. Your school requires school bags and accessories in bulk for the commencement of the new session. Write a letter of inquiry to the Sales Manager, Sky Bags Industries Ltd. 15/3, Ravi Nagar, Delhi enquiring about the details of goods manufactured.

Ans :

Diksha Stores
32/54, Rajeev Nagar
Delhi
28th August, 2019
The Sales Manager
M/s Sky Bags Industries Limited
15/3, Ravi Nagar
Delhi

Subject : Inquiry about school bags and accessories
Sir,

There has been enormous demand by our customers of the school bags and accessories you manufacture for primary and secondary school students and they are inquiring about quality, price, durability, etc.

We shall feel obliged if you could please send

us 100 pieces of school bags for every age group on approval and return basis.

If we find the quality and price satisfactory then we expect to purchase more from you. Before placing a large order of the bags, we would like you to send the above quantity of the desired products on approval basis.

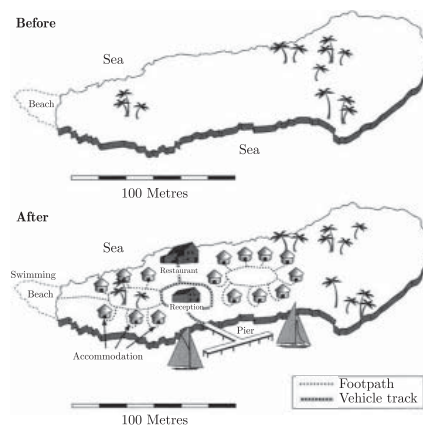
The remaining of the unsold pieces would be returned to you at your expense within a period of one month from receipt of the products.

We hope to hear from you very soon.

Yours faithfully
Rakesh
Store Incharge

2. Attempt ANY ONE from A and B given below. 5

- A. The two maps below show an island, before and after the construction of some tourist facilities. Write an analytical paragraph in 100-120 words by selecting and reporting the main features, and making comparisons where relevant.



Ans :

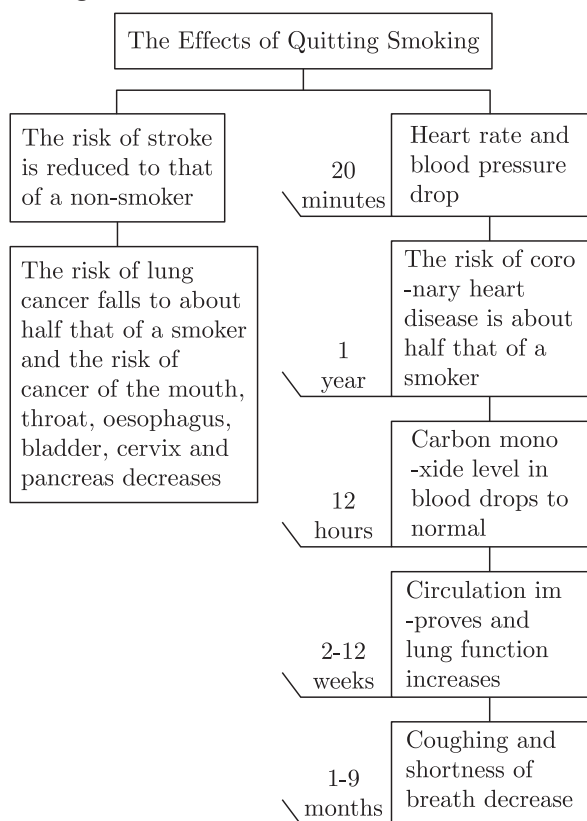
Transformation of an Island

Both maps display an island, before and after it was developed for tourism. The island is approximately 250 metres long, has palm trees dotted around it, is surrounded by ocean and has a beach to the west. Over the period, the island was completely transformed with the addition of a hotel and a pier; however, the eastern part of the island appears to have been left undeveloped. The most noticeable additions are the hotel rooms. 6 buildings, surrounding some trees, have been built in the west of the island and 9 buildings have been constructed in the centre of the island. Between the two accommodation areas, a reception building and a restaurant have been developed. A pier has also been built on the south coast of the island, allowing yachts access to the resort. Apart from the trees, the beach remains the only natural feature to

remain relatively untouched; however, it does appear that it is now used for swimming.

Or

- B. Study the concept chart from a recent study by WHO that has described some positive effects of quitting smoking.



Write an analytical paragraph in 100-120 words, analysing the given information.

Ans :

Positive Effects of Quitting Smoking

Smoking is the silent killer that affects a large number of people around the world. The negative effects of tobacco smoke are well known, but the good news is that the positive effects of kicking the habit can't be missed. A smoker can leave the habit forever and can see the amazing results to live a healthier and happier life. As part of a report released by the World Health Organization for World No Tobacco Day, the potentially devastating effects of smoking can be successfully reversed. After just 20 minutes, the first health improvements begin with a drop in heart rate and blood pressure. Within 12 hours carbon monoxide levels drop to normal and after a few weeks lung function increases and circulation improves. Within 1-9 months the person experiences decreased coughing and shortness of breath. Even the elevated

risk of stroke or coronary heart disease is gone within 15 years. Cancer of lungs along with that of mouth, throat, oesophagus, bladder, cervix and pancreas also becomes a much less significant threat after about ten years. So, quitting smoking is the best decision a smoker can take to improve the quality of his life.

SECTION C- LITERATURE

40

V. Reference to the Context

10

1. Attempt ANY ONE of two extracts given.

5

- 1.A "Paper has more patience than people" I thought of this saying on one of those days when I was feeling a little depressed and was sitting at home with my chin in my hands, bored and listless, wondering whether to stay in or go out. I finally stayed where I was, brooding: Yes, paper does have more patience, and since I'm not planning to let anyone else read this stiff-backed notebook grandly referred to as a 'diary', unless I should ever find a real friend, it probably won't make a bit of difference."

(From the Diary of Anne Frank)

- i. 'Paper has more patience than people.' What does this imply?

Ans : This implies that Anne felt that she could pour her heart out on paper without any hindrance.

- ii. Pick out the emoticon which clearly brings out the meaning of 'listless' as used in the extract?



(i)



(ii)



(iii)



(iv)

- (a) Option (i)
(b) Option (ii)
(c) Option (iii)
(d) Option (iv)

Ans : (c) Option (iii)

- iii. Infer one reason for the following, based on information in extract:

Anne doesn't plan to let anyone else read her diary.

Ans : It's about her intimate feelings.

iv. If the diary were a 'real friend', what qualities would Anne expect it to have?

Pick the option that lists these correctly.

1. optimistic
2. good listener
3. confidant
4. energetic
5. non-judgemental
6. outgoing
7. ambitious

- (a) 1 and 4
(b) 5, 6 and 7
(c) 2, 3 and 5
(d) 3 and 7

Ans : (c) 2, 3 and 5

v. Pick out the sentence that brings out the meaning of 'brooding' as used in the extract?

- (a) The mysterious house on the hill is still brooding above the village.
(b) The people at the stock market always keep brooding about the gains.
(c) He was brooding over the matter and took a long time to decide.
(d) Suspense and drama were brooding at the site of the investigation.

Ans : (c) He was brooding over the matter and took a long time to decide.

Or

1.B I think he knew I made a little money this way but he did not seem to mind. Anil made money by fits and starts. He would borrow one week, lend the next. He kept worrying about his next cheque, but as soon as it arrived, he would go out and celebrate. It seems he wrote for magazines - a queer way to make a living!

(The Thief's Story)

i. Complete the following with a phrase from extract:

| Opinion | Reason |
|---------|-------------------------------------|
| ----- | Anil received money intermittently. |

Ans : By fits and starts

ii. The information in the extract suggests that Anil could be a

- (a) salaried professional
(b) freelancer
(c) business man
(d) volunteer

Ans : (b) freelancer

iii. Complete the following analogy correctly with a word/phrase from extract:

lose : find :: lend : -----

(Clue : Just like lose is antonym of find, similarly lend is antonym of...)

Ans : borrow

iv. The reference to making a little money 'this way' refers to a way that is viewed by most people as

- (a) sensible
(b) inappropriate
(c) charitable
(d) Aggressive

Ans : (c) charitable

v. Based on your understanding of Anil in the extract, choose the option that synchronises with his thinking.

- (a) So what if I don't have much money? Giving it to that person is important as they could do with a helping hand.
(b) I better learn how to protect my money. I think I'm being looted.
(c) I earn money with such tremendous effort. Where does it all go?
(d) When I become rich, I can begin to help friends then. Right now, I will spend only on myself.

Ans : (a) So what if I don't have much money? Giving it to that person is important as they could do with a helping hand.

2. Attempt ANY ONE of two extracts given. **5**

2.A Some say the world will end in fire
Some say in ice.
From what I've tasted of desire
I hold with those who favour fire.

(Fire and Ice)

i. Which literary device has been used in 'I hold with those who favour fire'?

- (a) Simile
(b) Assonance

- (c) Alliteration
(d) Enjambment
Ans : (b) Assonance
- ii. How many predictions does the poet make for the ending of the world?
Ans : Two
- iii. What does 'Fire' symbolise according to the poet?
(a) Desire
(b) Avarice
(c) Greed
(d) All of these
Ans : (d) All of these
- iv. State whether the following statement is TRUE or FALSE:
People think that the world is a beautiful place to live in.
Ans : FALSE

- v. What is the poet's opinion about the world?
(a) The poet feels that a man should fulfil all his desires.
(b) He think that we should control our growing desires.
(c) He feels that we should live life to the full.
(d) He says that one should live the life of an ascetic.
Ans : (a) The poet feels that a man should fulfil all his desires.

Or

- 2.B** Belinda tickled him, she ticked him unmerciful,
Ink, Blink and Mustard, they rudely called him Percival,
They all sat laughing in the little red wagon
At the realio, trulio, cowardly dragon.
(The Tale of Custard the Dragon)
- i. Who was tickled by Belinda?
Ans : Dragon.

- ii. Why did she tickle 'him'?
(a) To make him happy
(b) To bite him
(c) To make fun of him
(d) To mistreat him
Ans : (c) To make fun of him
- iii. Who are Ink, Blink and Mustard?
(a) Belinda's friend
(b) Belinda's pet
(c) Belinda's neighbour
(d) None of these
Ans : (b) Belinda's pet
- iv. Why did they all laugh at 'him'?
(a) He was a coward
(b) He was childish
(c) He was too ugly
(d) He wore make up
Ans : (a) He was a coward
- v. Fill in the blank with ONE WORD only.
All other pets were _____ to the dragon.
Ans : Rude

VI Answer ANY FOUR of the following in about 40-50 words each. $4 \times 3 = 12$

- i. What was the effect of hailstones on Lencho's crop ?
(A Letter to God)
Ans :
For an hour, the hailstones rained on the house, the garden, the hillside, and on Lencho's cornfield soon. The field turned white, as if covered with salt. Not even a leaf remained on the trees and the corn crop of Lencho was totally destroyed as the flowers were gone from the plants.
- ii. Young seagull tried to fly but he could not. Why was he afraid to fly ?
(Two Stories About Flying)
Ans :
The young seagull felt certain that his wings were too weak to support him. He had no courage to flap his wings. Even when each one of his brothers and sisters whose wings were much shorter than his, ran to the brink of the ledge, flapped their wings and flew away, he failed to muster up courage to take that plunge.

- iii. Why should the tiger snarl around houses at the edge of the forest ?

(A Tiger in the Zoo)

Ans :

The tiger loves his natural habitat but human beings are encroaching upon his habitat. So, he tends to make his presence felt by showing his fangs and claws. He wants to scare the people so that they learn to respect wildlife and their habitat.

- iv. What makes Chubukov misunderstand the purpose of Lomov's visit?

(The Proposal)

Ans :

Lomov came to Chubukov's house in a formal dress. So, Chubukov thought that Lomov must have come to borrow money as he had been doing the same earlier. But the actual purpose of his visit was to propose to his daughter. Thus, Chubukov misunderstood the purpose of Lomov's visit.

- v. "Money is external". What does the poet mean by this expression taken from 'The Ball Poem'?

Ans :

By this expression the poet intends to make us realize the mere material value of money which in no way helps us to understand the essential worth of a commodity. In this world of possessions, the value of money is only to buy things and this does not make us understand the true value of things.

VII Answer ANY TWO of the following in about 40-50 words each. $2 \times 3 = 6$

- i. How did Ausable befool Max about the balcony?
(The Midnight Visitor)

Ans :

Ausable was a very intelligent spy agent. When he found Max waiting for him in his room, he immediately thought of the plan. He told Max that there is a balcony from where people enter in his room that Max must have also entered from there. Max got convinced about the story and hence when someone knocked at the door, he ran towards the balcony to hide and died.

- ii. Griffin's brilliance as a man of science fades before his darker traits. Comment.

(Footprints Without Feet)

Ans :

Griffin was a lawless person, he was disliked by most people, was quick tempered, burnt the house of the landlord to take a revenge on him, stole money at priest's house. Thus we can say that he was undoubtedly brilliant scientist but his brilliance eclipsed by his negative traits.

- iii. What does Noodle tell Think-Tank about the books?
(The Book that Saved the Earth)

Ans :

Noodle hesitantly informed Think-Tank that the books were a sort of communication device. He told that he had seen surveyor films of those 'sandwiches'. He had noticed that the Earthlings did not eat them. They used them as sort of communication device.

VIII Answer ANY ONE of the following in about 100-120 words. 6

- i. Gotami comes to Buddha praying to him to revive her dead son. Buddha asks her to bring a handful of mustard seeds from a house where no one has lost a child, husband, parent or friend. Through this simple act, Buddha communicates the most profound truth of life, not only to Gotami but also to the whole mankind. What is the truth that Buddha communicates? What lesson does Gotami learn? What changes would take place in a common man's life if that truth is understood?

(The Sermon at Benares)

Ans :

The Buddha communicates the truth of life that death is common to all. The life of mortals, i.e. human beings, is troubled, brief and combined with pain and untold sufferings. Nobody can escape death. So, those who are born, will certainly die one day. Hence, we should not grieve on death.

Kisa Gotami learns the lesson that death is the ultimate truth of life. She could not find any house where no one had ever died. She now realized that death comes to all. No one can escape death. The lights of the city flicker and resemble the fate of men.

If a common man realizes that death is common to all, he will not weep on death and never grieve on sorrows. He can get peace of mind by drawing out the arrow of lamentation from his heart. He who has overcome sorrows will be free from sorrows and be blessed.

Or

- ii. "Difficulties do come in our lives, but they are not there to stay forever." Comment on this statement with reference to the poem 'Fog' by Carl Sandburg.

Ans :

When people face difficulties in their lives, at the end, these problems tend to leave them hopeless and shattered. It takes a lot of courage for anyone to overcome their problems and to even try to solve it. But if we take a lesson from this poem 'Fog' and compare our difficulties to a fog, we find that just like a fog, the difficulties also come and go. They are not a permanent resident in our lives and hence, don't stay forever.

There is no need for us to become hopeless and lose courage when are faced with problems. We should rather try to think of those difficulties or problems as a fog, meaning that think of it as something that has not come to stay for long, but something will always leave, like every other bad period of our lives.

IX Answer ANY ONE of the following in about 100-120 words. 6

- i. Albert Einstein said, 'The important thing is to never stop questioning.' Richard was a genius who proved this quote true. Justify.

(The Making of a Scientist)

Ans :

Surely, this statement is true in the case of Richard Ebright because he always kept himself busy in constructive experiments since his early childhood. Richard had a habit of asking questions about new things and his mother answered all his questions in the most satisfying manner. This question and answer round turned into a habit in Richard and he kept on probing things. His scientific bent of mind led him to carry on experiments after experiment and reach a purposeful conclusion. Although to reach his goal he was helped by many people in his journey, especially his mother whose contribution is commendable. He had patiently waited for almost a year to study butterflies' migration. This shows that he never stopped midway and finally became a great scientist.

Or

- ii. Give a brief character sketch of Mrs. Pumphrey. What values are reflected through her character ?

(A Triumph of Surgery)

Ans :

Mrs. Pumphrey was a rich lady with a lot of love for pet dog, Tricki. She loved to live comfortably in a luxurious way. She took an extra care of Tricki by overfeeding him. She was not very intelligent as she was not able to make out that the excess of weight and the fur coats do not allow the dog to move and play. She thought that her loving pet was serious. She was so fond of her dog that she had got a wardrobe separate for daytime and night-time beds, and a number of lovely fur coats. She pampered Tricki by

giving him the food, that should not be given to a dog. She was really a loving lady as the news about the surgery of her pet dog shocked her and her eyes brimmed with tears. She could not refuse delicious and favourite food to Tricki which made him overweight and inactive. Even in the hospital, she sent him eggs and brandy. Her fondness for the dog and extra care showed that she had motherly attitude towards Tricki.