

5. DISTRICT ADMINISTRATION

Write your address -

Name _____

Ward _____

Village/city _____

Tehsil _____

District _____

State _____

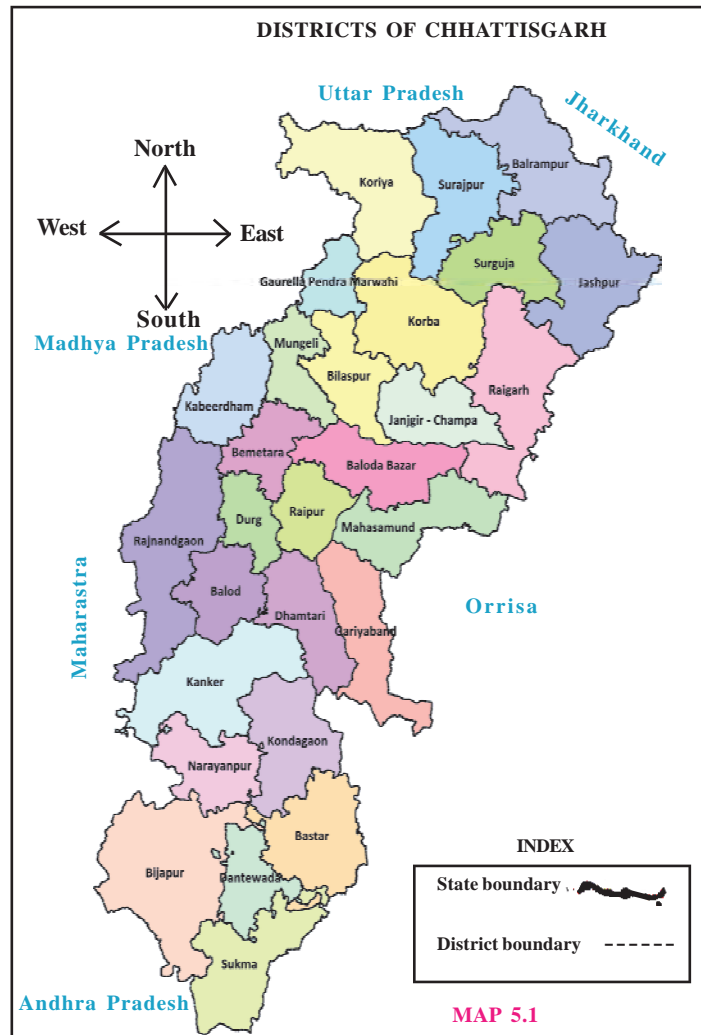
You live at one place then how come there are names of so many places in your address? After all, where do you live - in a village, city, tehsil, or district?

We can understand it in a different way. You live in your house, near your house there are several other houses too which altogether becomes a ward. Now your ward along with other wards becomes a village/city. You are living in your house and you are living in a ward of a village/city too.

Your village is in a block. Your village together with other villages becomes a block.

Your block is in your district. Your block together with other blocks forms your district.

Find out how many blocks are there in your district.



MAP 5.1

DISTRICT OFFICERS AND EMPLOYEES

For proper administration a state is divided into districts and blocks. The District Administration is the most important unit.

Colour your district in the map and write down the names of the neighbouring districts. How many districts are there in Chhattisgarh?



To execute the government policies and maintain the law and order - a district is administered by a district collector or district magistrate and other officers.

THE DISTRICT COLLECTOR

You must have heard about collector,. It is the responsibility of the district collector to supervise the work done in all the blocks and villages.

FUNCTIONS OF THE DISTRICT COLLECTOR

The main functions of District collector are :

1. The District Collector is responsible for maintaining law and order.
2. The collector is also responsible for maintaining land records, collecting revenue and solving land disputes.
3. The district administration takes care of civic amenities in the district. It provides health services, education facilities and undertakes public works like the construction and maintenance of roads, bridges and buildings.
4. The different elections of the central and the state government have to be executed at the district level by the district collector.
5. The Collector supervises the working of urban and rural local government bodies within the district.

Can the collector execute all the work alone? No! There are several departments like the education department, police department, health department, revenue department etc. These departments have different officers who work under the collector. Any complaint against an officer or employee can be made to the collector. For example, if there is a dispute over ownership of land and no hearing takes place, then the farmer can give an application to the collector. During droughts, floods, fires, earthquakes, storms etc., help can be asked directly from the collector.

The collector works at the district headquarter. However this does not mean that he performs his duties sitting in his office. He has to go to different villages from time to time. In a day a collector performs several types of work.

What is most important is that he or she can work only within the rules and regulations of the state government. He or she cannot make any rules nor change them.



JUDICIAL ADMINISTRATION IN DISTRICTS

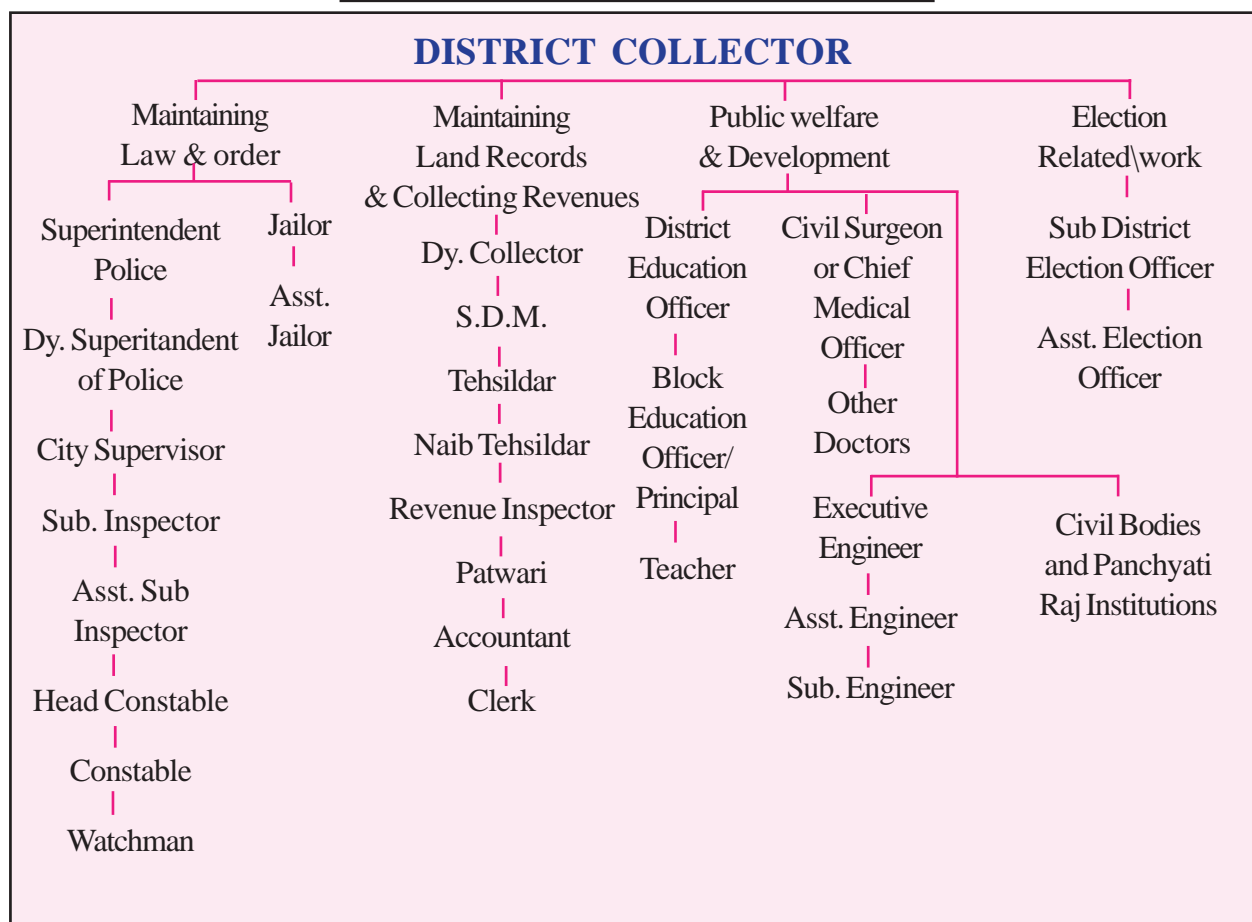
Every district has an independent judicial court and the collector has judicial rights as a magistrate. However, each district court has to work under the guidance of the high court of the state. In Chhattisgarh the High Court is located at Bilaspur.

Discuss with your class teacher about court.

1. Who is the Collector of your district ?
2. In the given chart, list the officers who are working in your village/city ?
3. Call the officer (Patwari) of the village to your class and ask how he maintains the land records of the village

The chart below shows the different officers and employees who work at different places for the collector.

DISTRICT ADMINISTRATION



**EXERCISE****I. Match the Following.**

A	B
Education department	Sub-inspector
Revenue department	Chief Medical Office
Police department	Naib tehsildar
Health department	Assistant Engineer
Irrigation department	District Education Officer

II. Correct and write the following sentences.

1. The collector provides civic amenities for the whole district.
2. The Collector of Korla district will solve the problems of Raigarh district.
3. All the schools in a district work under the collector.
4. Courts of a district function under the supervision of the district magistrate.

III. Answer the following questions.

1. Why is a state divided into districts and blocks?
2. Write down the functions of a collector.
3. Which health facilities are available in your district? Find out from your teacher.
4. Write the name of the major departments under district administration.

IV. Discuss with your teacher.

After the formation of Chhattisgarh state, many new districts have been formed. How will they be useful to us ?

