

### 13. Only God can Make a Tree



*Have you ever planted a sapling and seen it grow? If yes, share your experience with your classmates.*

I think that I shall never see,  
A poem lovely as a tree.  
A tree whose hungry mouth is prest,  
Against the earth's sweet flowing breast.  
A tree that - looks at - God all day,  
And lifts her leafy arms to pray.  
A tree that may in summer wear,  
A nest of robins in her hair.  
Upon whose bosom snow has lain,  
Who intimately lives with rain.  
Poems are made by fools like me,  
But only God can make a tree.



*- Joyce Kilmer*

#### Word Meanings

robin	a small bird, (found in Europe)
bosom	chest
prest	pressed ( poetic form in spelling )
intimate	very close, dear
lain (v)	spread
leafy arms	branches of a tree with leaves

#### Reading Comprehension

A. Put a ( ✓ ) tick mark on the correct alternative.

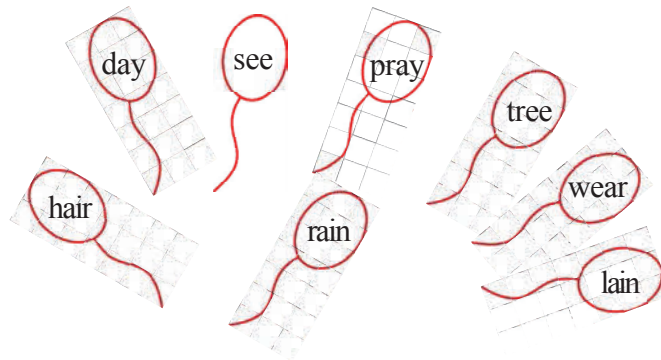
- Who is 'I' in the poem ?  
(a) tree                      (b) women                      (c) poet                      (d) bird
- The tree is like -  
(a) a mother                      (b) a child                      (c) God                      (d) The Earth
- The tree is fed by -  
(a) another tree                      (b) Mother Earth                      (c) God                      (d) the Robin
- The Earth in the poem is compared to -  
(a) God                      (b) a little girl                      (c) a mother                      (d) a tree
- The hair of the tree is its -  
(a) stem                      (b) branches                      (c) flowers                      (d) roots

**B. Answer the following questions.**

1. What does the tree wear during summer ?
2. What part of the tree is referred to as its mouth ?
3. How can the tree lift its arms to pray ?
4. Which lines show that the tree is a female ?
5. Who lives intimately with the tree ?
6. What does the tree get from the earth's sweet flowing breast ?
7. What lay in the bosom of the tree ?

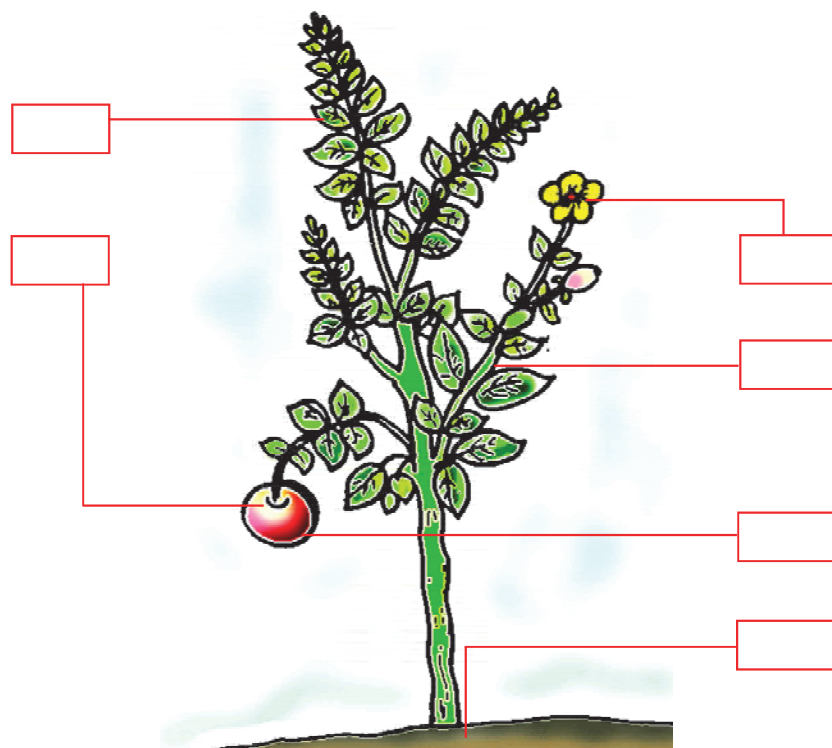
**Vocabulary**

**A. Find out the rhyming pairs of the words.**



**B. Label the parts of the tree select your words from the list given in the box :**

- Flower
- Root
- Branch
- Bark
- Trunk
- Fruit
- Leaf



## ***Writing***

**Write a paragraph about your favourite tree. Take the help of the questions given.**

1. Which is your favourite tree ?
2. Where is it situated ?
3. How do you care for it ?
4. How is it useful to you ?

## ***Activity***

### **Role play**

**Ask a student to play the role of a tree. Other students will go to the tree and ask/request to cut, use, pluck, scratch the different parts of the tree.**

They can use sentences such as:

**Student 1** : May I pluck your flowers ?

**Tree** : Yes, you may.

**Student 2** : Shall I scratch my name on you ?

**Tree** : No please. It will hurt me.

## ***Project***

**Collect leaves of different plants. Paste them on a herbarium file.**

