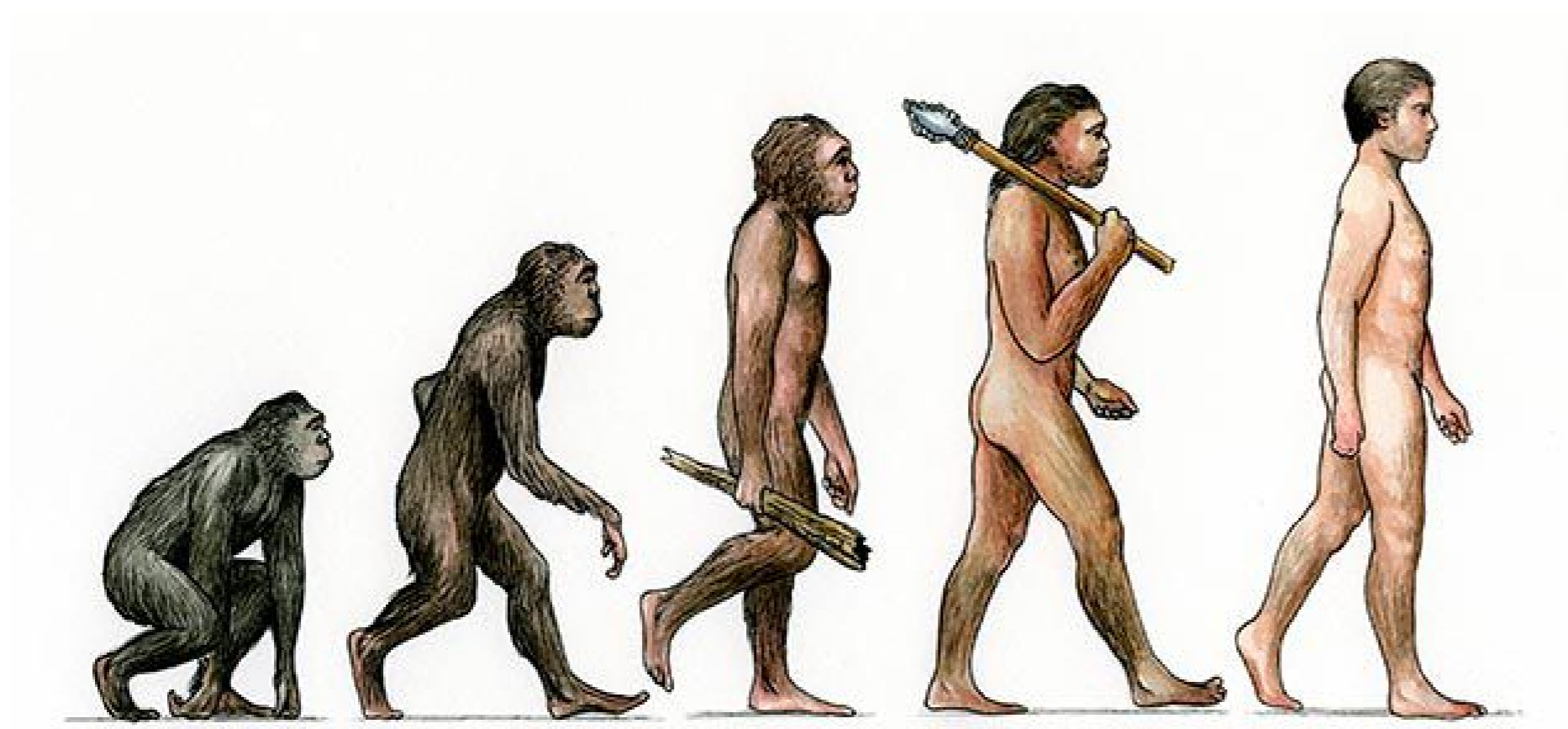


Case study based questions  
10th Science

## Heridity and Evolution

Passage - 1

5 Marks



Riya showed a picture to Priya and claimed that men were initially monkeys. Riya was astonished to hear this and asked Priya some questions

Q1. (1) TRUE

Q2. (2) Homo sapiens

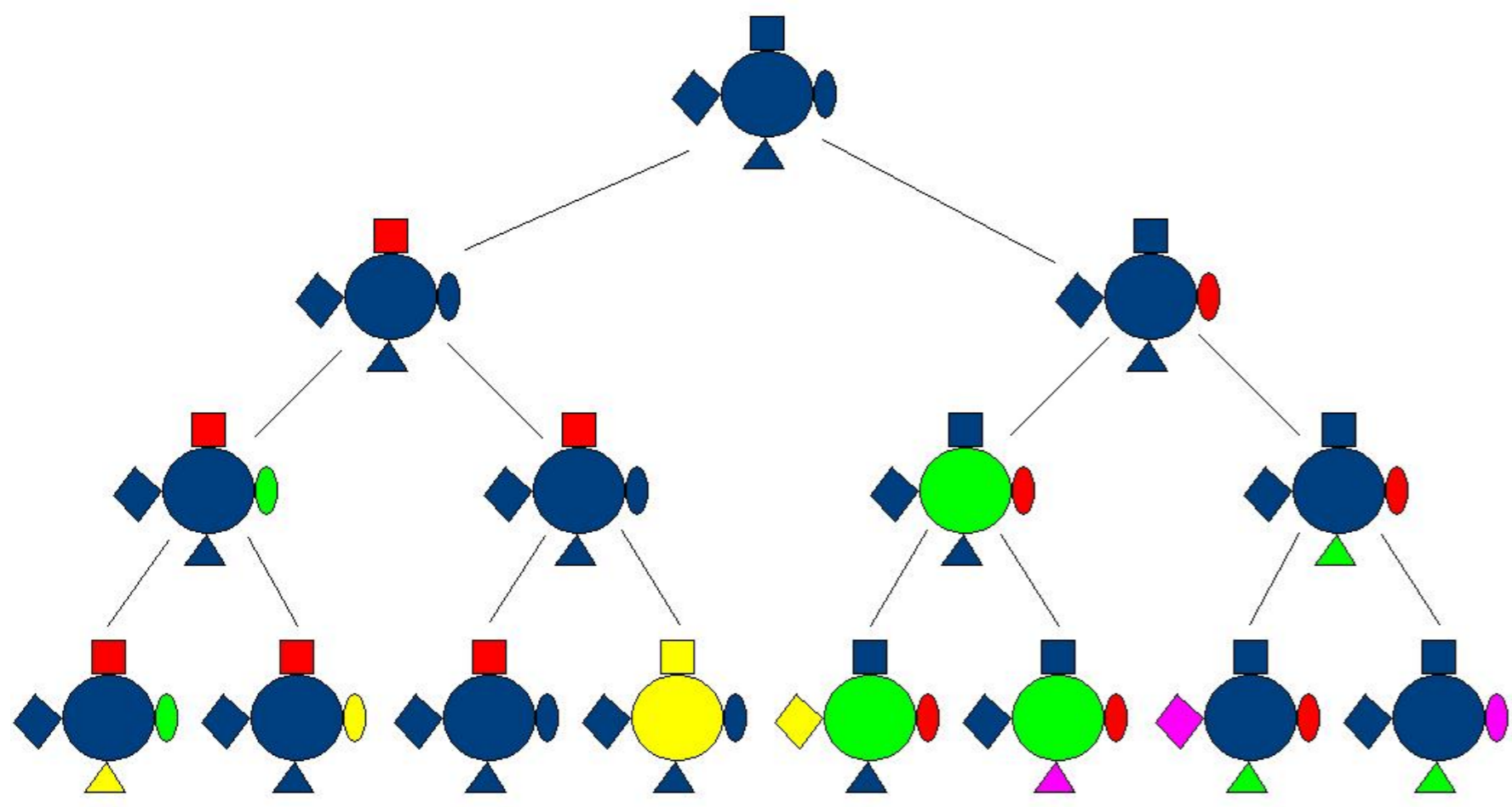
Q3. (2) NO

Q4. (2) NO

Q5. (1) TRUE

Passage - 2

5 Marks



From the chapter Heridity and Evolution, Raju was given some questions to solve. Help Raju solve these questions.

Q1. (1) Haploid cells

Q2. (2) Diploid cells

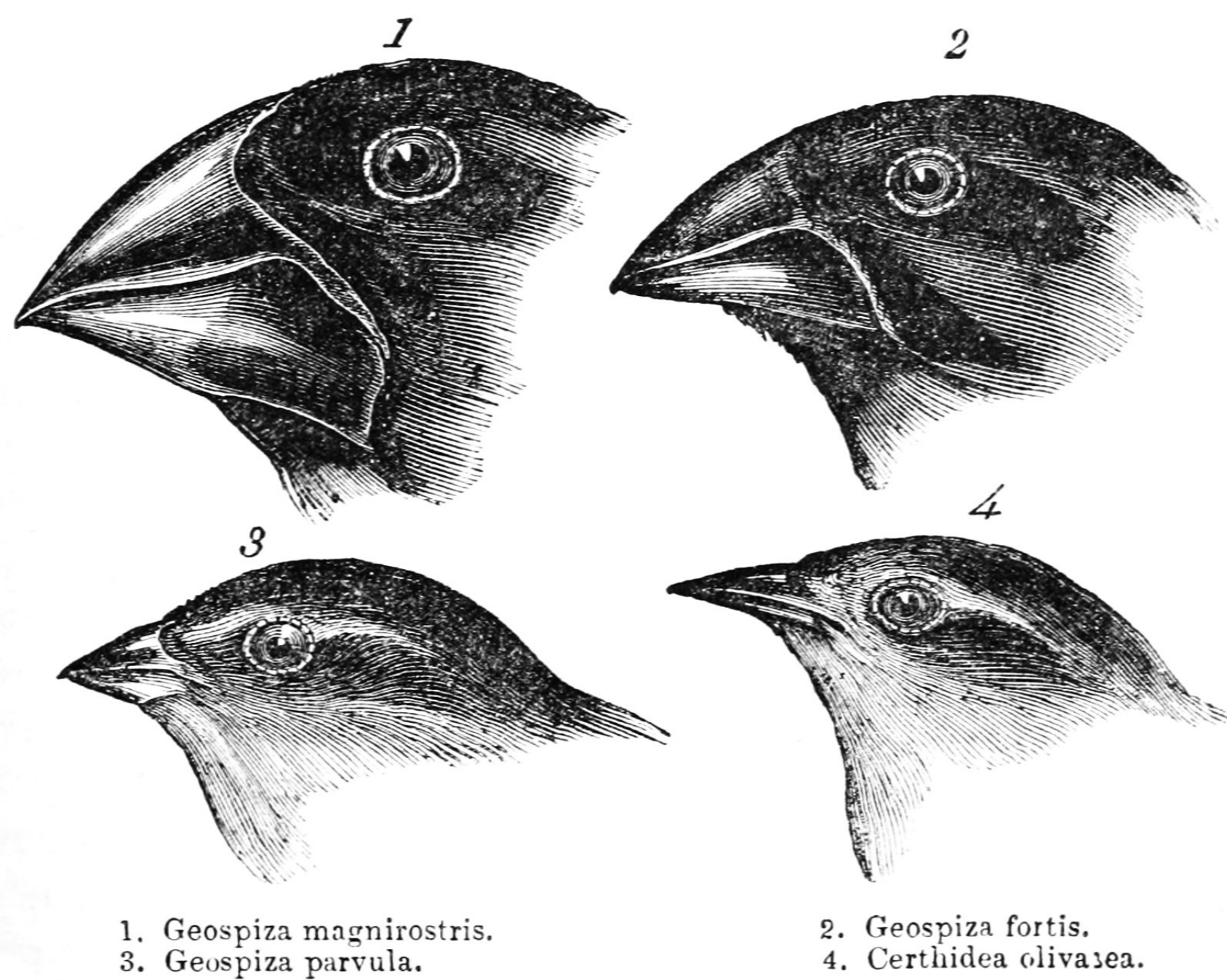
Q3. (1) Speciation

Q4. (2) Molecular phylogeny

Q5. (2) Trait

Passage - 3

5 Marks



Rita's teacher told her that the beaks of birds changed over a long period of time. She was told to study about them after which her teacher asked her some questions.

Q1. (1) Evolution

Q2. (3) Lamarck

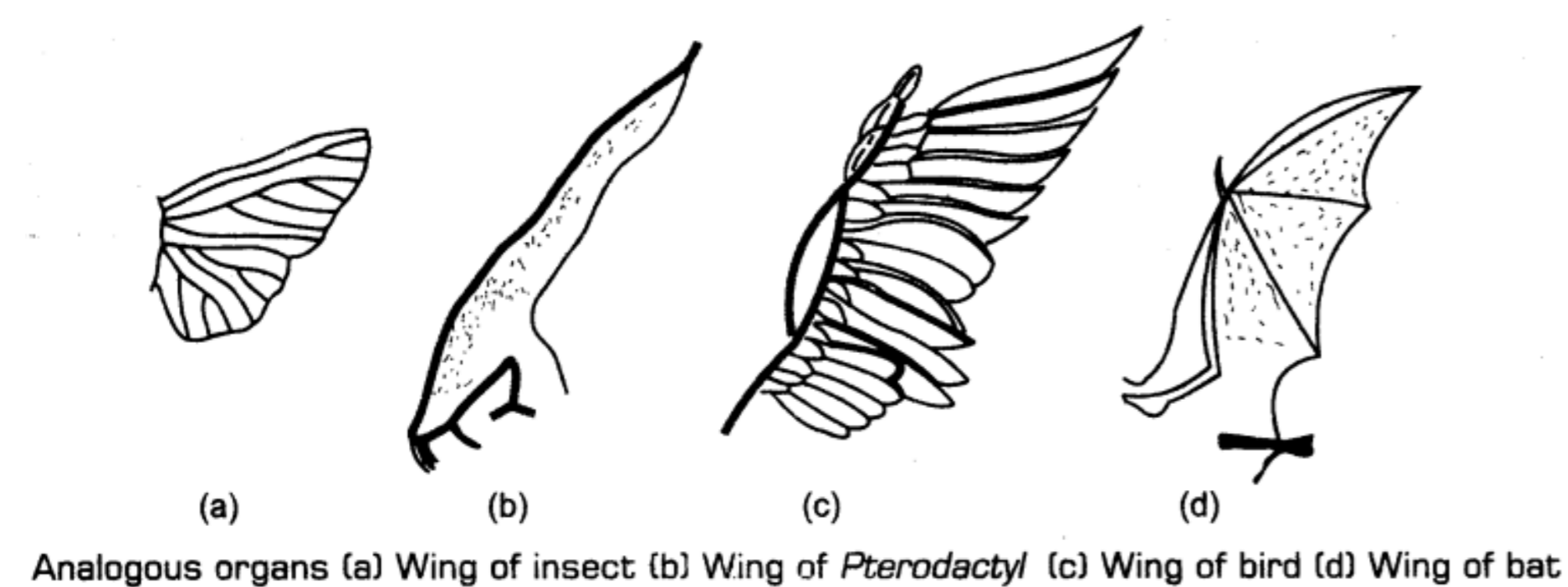
Q3. (1) Darwin

Q4. (2) Mutation

Q5. (4) Isolation

Passage - 4

5 Marks



A group of students went to a zoo for excursion. On their return, their teacher asked them to fill up a survey to make sure the students gained knowledge from the visit.

Q1. (1) Analogous

Q2. (3) Function

Q3. (2) Homologous

Q4. (1) Analogous

Q5. (1) Analogous organs

**Passage - 5**

**5 Marks**



A group of students were given to interpret the above picture. They made a questionnaire to made the process of interpretation easy.

Q1. (2) Sex chromosomes

Q2. (3) Sexual reproduction

# Answer Key 9.5

Marks - 25

---

Q3. (3) Y-chromosome

Q4. (2) FALSE

Q5. (3) Sex chromosomes

---

Case study based questions  
10th Science

## Heridity and Evolution

Passage - 1

5 Marks



Rhea was given to fill up a chart. Help her to do the same.

Q1. (1) Acquired trait

Q2. (1) Acquired trait

Q3. (2) Inherited trait

Q4. (2) Inherited trait

Q5. (2) Inherited trait

Passage - 2

5 Marks



Ron went to their home garden with his mother. On seeing the plant as above, Ron's mother gave him a hint that this plant was used for a very famous experiment.

Q1. (1) Pea

Q2. (2) Mendel

Q3. (3) Inheritance

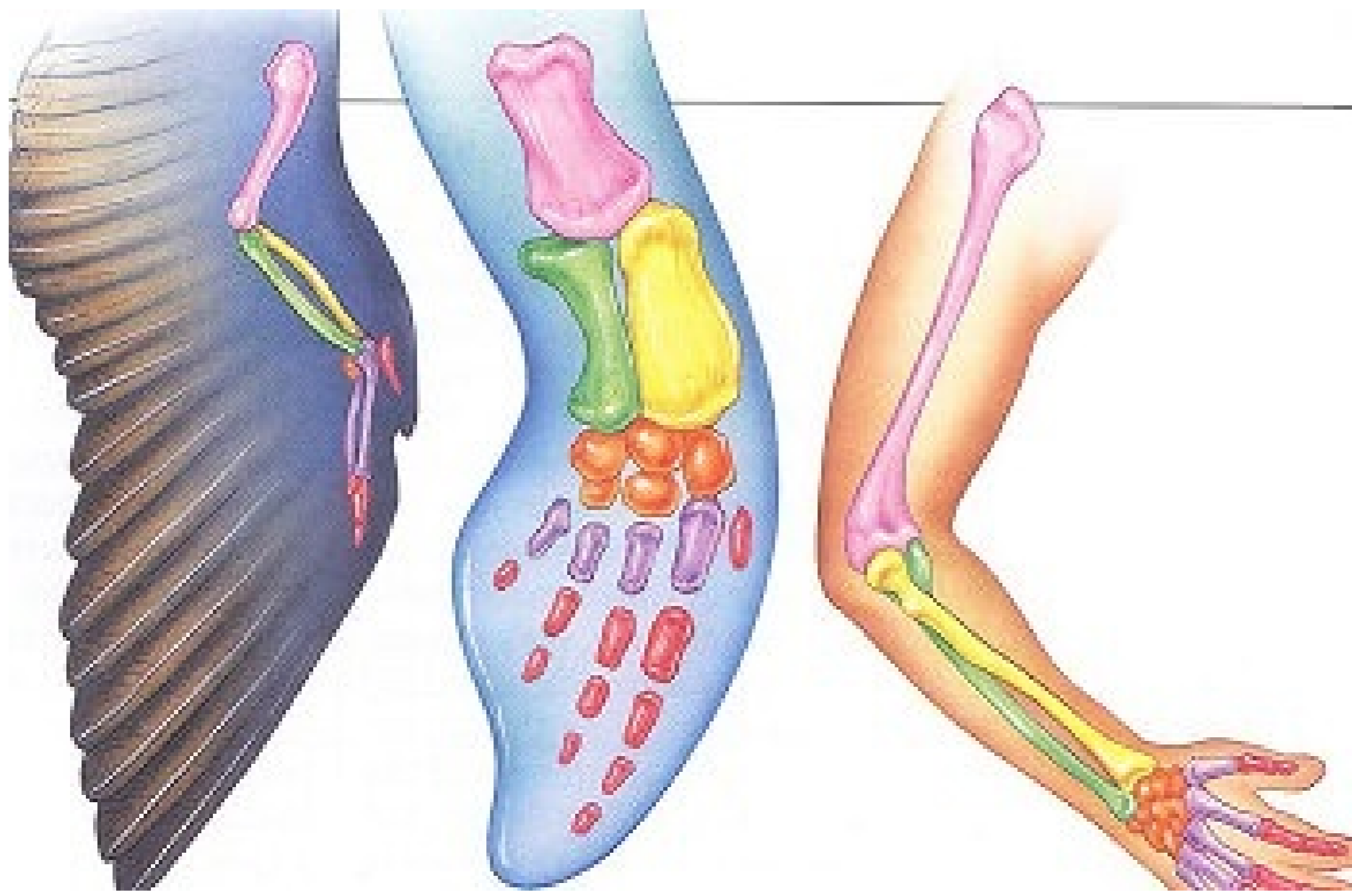
Q4. (4) 7

Q5. (1) Garden

Passage - 3

5 Marks

---



The teacher gave the class an assignment to write certain points about the given picture and complete the quiz. Assist them with the process.

Q1. (2) Homologous

Q2. (4) Evolutionary relationship

Q3. (2) NO

Q4. (1) YES

Q5. (1) Fossil

Passage - 4

5 Marks



The class was asked a few questions regarding the given picture in a survey.

Q1. (1) DNA

Q2. (2) Mutation

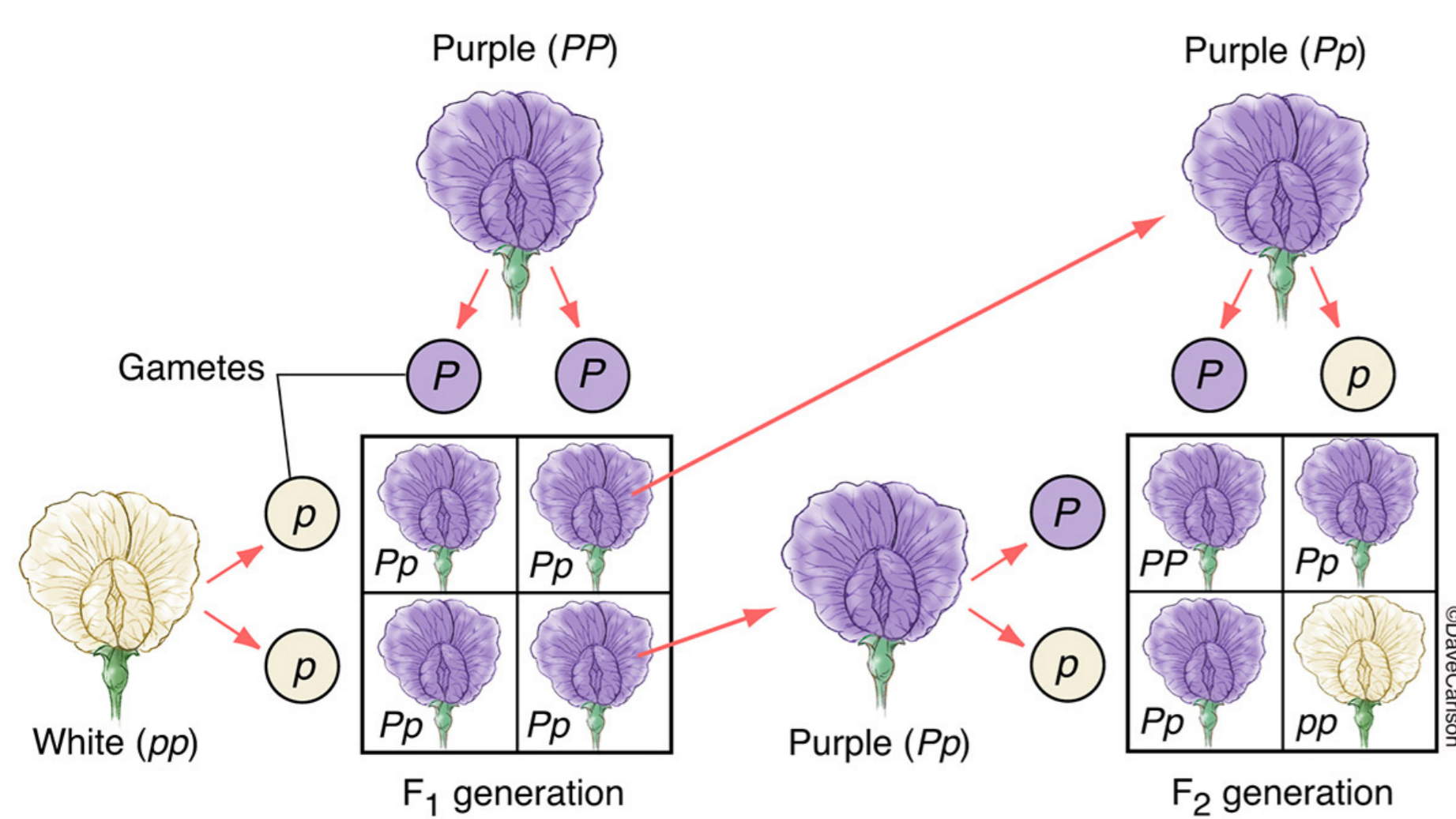
Q3. (2) NO

Q4. (1) TRUE

Q5. (2) FALSE

Passage - 5

5 Marks



Rita was given to identify the characteristics of the given figure by her teacher.

Q1. (1) Monohybrid cross

Q2. (4) All have the same genotype

# Answer Key 9.6

Marks - 25

---

Q3. (4) All have the same phenotype

Q4. (2) 1:02:01

Q5. (3) 3:1

---